

# MISSOURI BANDMASTERS ASSOCIATION MISSOURI ALL-STATE BAND AUDITION MATERIALS

TENOR SAXOPHONE

Sets II, III, IV

Scale: All scales are to be MEMORIZED.  
Prepare them all slurred and tongued in sixteenth notes at quarter note = 88.  
Scales should be performed ascending and descending. Scales given are the starting tone. DO NOT TRANSPOSE.

All scales are to be prepared from required scale sheet as written.

Chromatic: Perform the chromatic exactly as written.

Major Scales: C G D A E B/Cb F#/Gb C#/Db Ab Eb Bb F

Minor Scales: a e b f# c# g#/ab d#/eb a#/bb f c g d

Books: *Selected Studies for Saxophone – Voxman/Rubank Publication*  
*Universal-Prescott, 1<sup>st</sup> and 2<sup>nd</sup> Year – Carl Fischer Publication*

Set I (2020-21)	Selected Studies	p. 9	all
		p. 29	all
	Universal-Prescott	p. 42	#79
		p. 209	#8
		p. 209	#10
	p. 212	#4	
	p. 214	last 3 lines	
<hr/>			
Set II (2021-22)	Selected Studies	p. 5	Mod. Assai
		p. 7	all
	Universal-Prescott	p. 44	#88
		p. 210	#16
		p. 210	#17
		p. 213	#11
	p. 214	lines 7, 8, 9, & 10	
<hr/>			
Set III (2022-23)	Selected Studies	p. 8	Andante
		p. 15	Vivace
	Universal-Prescott	p. 44	#86
		p. 210	#15
		p. 210	#18
		p. 212	#6
	p. 214	lines 4, 5, & 6	
<hr/>			
Set IV (2023-24)	Selected Studies	p. 3	all
		p. 6	all
	Universal-Prescott	p. 42	#78
		p. 208	#3
		p. 208	#5
		p. 212	#3
	p. 214	lines 1, 2, & 3	



# MISSOURI ALL-STATE-BAND AUDITION SCALES

to be played at a minimum tempo of quarter note = 88

Saxophones

## Chromatic Scale

Two staves of musical notation for a chromatic scale. The first staff shows the ascending scale from C4 to C5. The second staff shows the descending scale from C5 to C4. The notes are: C4, C#4, D4, D#4, E4, E#4, F4, F#4, G4, G#4, A4, A#4, B4, B#4, C5, C5, B5, B#5, A5, A#5, G5, G#5, F5, F#5, E5, E#5, D5, D#5, C5.

## Missouri ASB Major Scales

### C Major Scale

Musical notation for the C Major Scale, ascending and descending.

### G Major Scale

Musical notation for the G Major Scale, ascending and descending.

### D Major Scale

Musical notation for the D Major Scale, ascending and descending.

### A Major Scale

Musical notation for the A Major Scale, ascending and descending.

### E Major Scale

Musical notation for the E Major Scale, ascending and descending.

**B Major Scale**



**Cb Major Scale**



**F# Major Scale**



**Gb major Scale**



**C# Major Scale**



**Db Major Scale**



**Ab Major Scale**



**Eb Major Scale**



**Bb Major Scale**



**F Major Scale**



Missouri ASB Melodic Minor Scales

**A Melodic Minor**



**E Melodic Minor**



**B Melodic Minor**



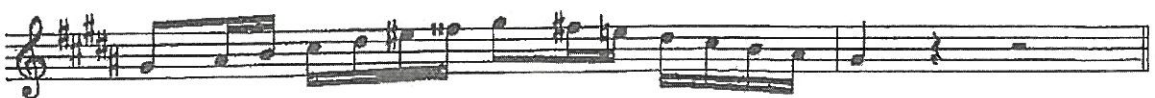
**F# Melodic Minor**



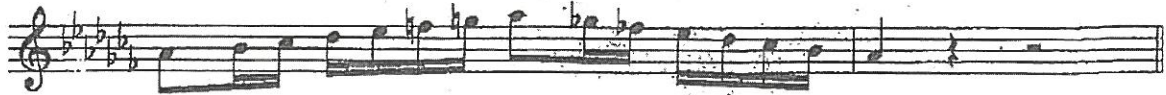
**C# Melodic Minor**



**G# Melodic Minor**



**Ab Melodic Minor**



**D# Melodic Minor**



**Eb Melodic Minor**



**A# Melodic Minor**



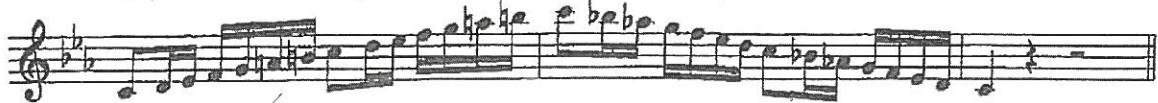
**Bb Melodic Minor**



**F Melodic Minor**



**C Melodic Minor**



**G Melodic Minor**



**D Melodic Minor**



Dist. Molto allegro

HEINZE

# F Major

FEDOROW

*District*

Andante

*p*

(1)

(2)

*cresc.*

*cresc.*

*f*

*mf*

*accol.*

*e* *cresc.* *f* *rall.*

*a tempo* *p*

*pp*

(1)

(2)

Dist = All

78.

Count: 1, 2, 3. 1, 2, 3. 1, 2, 3. 1, 2, 3. 1, 2, 3.

Bb major. Dist = All

No 5.

Bb major.

AS No 8.

G minor.

District = All