

# MISSOURI BANDMASTERS ASSOCIATION

## MISSOURI ALL-STATE BAND AUDITION MATERIALS

Bb SOPRANO CLARINET                      Sets II, III, IV

Scale: All scales are to be MEMORIZED.  
 Prepare them all slurred and tongued in sixteenth notes at quarter note = 88.  
 Scales should be performed ascending and descending. Scales given are the starting tone. DO NOT TRANSPOSE.

All scales are to be prepared from required scale sheet as written.

Chromatic: Perform the chromatic exactly as written.

Major Scales: C G D A E B/Cb F#/Gb C#/Db Ab Eb Bb F

Minor Scales: a e b f# c# g#/ab d#/eb a#/bb f c g d

Books: *Thirty-two Etudes for Clarinet – C. Rose/Carl Fischer Publication*  
*Klose Method for Clarinet – Simeon Bellison (revised)/Carl Fischer Publication*

Set I (2020-2021)	Thirty-Two Etudes	p. 20 p. 21	#20 – first 8 lines all
----------------------	-------------------	----------------	----------------------------

Klose	p. 126 p. 128 p. 132	Ab Major lines 5, 6, & 7 #9
-------	----------------------------	-----------------------------------

Set II (2021-2022)	Thirty-two Etudes	p. 3 p. 23	#2 – first 6 ½ lines #23
-----------------------	-------------------	---------------	-----------------------------

Klose	p. 127 p. 128 p. 129	E Major – line 5 lines 4, 8, 9, and bar 1 of 10 line 9, bar 2 thru line 10, bar 1
-------	----------------------------	---

Set III (2022-2023)	Thirty-two Etudes	p. 6 p. 24	#5 #24 – first 8 lines
------------------------	-------------------	---------------	---------------------------

Klose	p. 127 p. 128 p. 129	A Major – line 7 line 10 last measure, line 11,12, & 13 line 10, bar 2 thru line 11, bar 1
-------	----------------------------	--

Set IV (2023-2024)	Thirty-two Etudes	p. 17 p. 26	#17 #26 – first 6 ½ lines
-----------------------	-------------------	----------------	------------------------------

Klose	p. 127 p. 128 p. 129	B Major – line 2, bar 3 thru line 3, bar 3 lines 1, 2, & 3 line 8, bar 2 thru line 9, bar 1
-------	----------------------------	---



# MISSOURI ALL-STATE-BAND AUDITION SCALES

to be played at a minimum tempo of quarter note = 88

Bb Soprano Clarinet

## Chromatic Scale

## Missouri ASB Major Scales

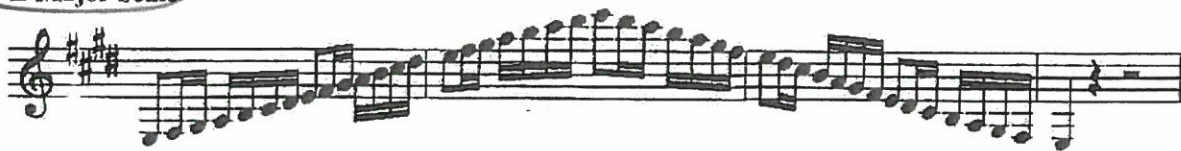
### C Major Scale

### G Major Scale

### D Major Scale

### A Major Scale

**E Major Scale**



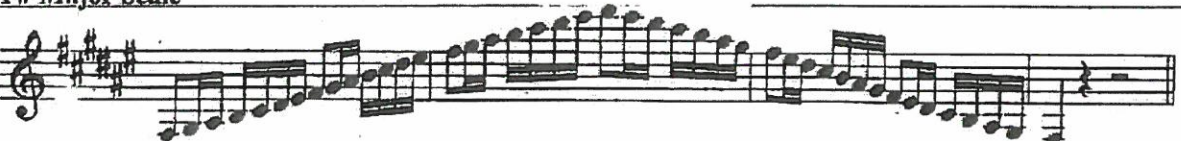
**B Major Scale**



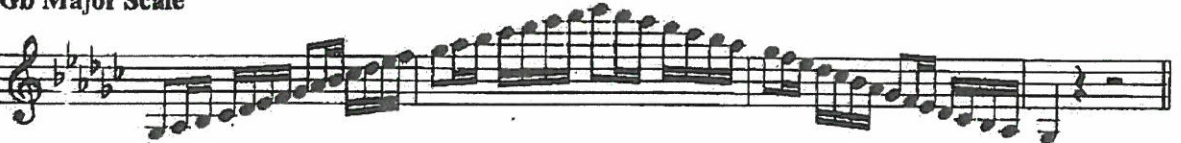
**Cb Major Scale**



**F# Major Scale**



**Gb Major Scale**



**C# Major Scale**



**Db Major Scale**



**Ab Major Scale**



**E<sub>b</sub> Major Scale**



**B<sub>b</sub> Major Scale**



**F Major Scale**



---

Missour ASB Melodic Minor Scales

**A Melodic Minor**



**E Melodic Minor**



**B Melodic Minor**



**F# Melodic Minor**

Two staves of musical notation for the F# Melodic Minor scale. The first staff shows the ascending scale: F#4, G4, A4, B4, C#5, D5, E5, F#5. The second staff shows the descending scale: F#5, E5, D5, C#5, B4, A4, G4, F#4.

**C# Melodic Minor**

Two staves of musical notation for the C# Melodic Minor scale. The first staff shows the ascending scale: C#4, D4, E4, F#4, G#4, A4, B4, C#5. The second staff shows the descending scale: C#5, B4, A4, G#4, F#4, E4, D4, C#4.

**G# Melodic Minor**

Two staves of musical notation for the G# Melodic Minor scale. The first staff shows the ascending scale: G#4, A4, B4, C#5, D5, E5, F#5, G#5. The second staff shows the descending scale: G#5, F#5, E5, D5, C#5, B4, A4, G#4.

**A<sup>b</sup> Melodic Minor**

Two staves of musical notation for the A<sup>b</sup> Melodic Minor scale. The first staff shows the ascending scale: A<sup>b</sup>4, B<sup>b</sup>4, C<sup>b</sup>5, D<sup>b</sup>5, E<sup>b</sup>5, F<sup>b</sup>5, G<sup>b</sup>5, A<sup>b</sup>5. The second staff shows the descending scale: A<sup>b</sup>5, G<sup>b</sup>5, F<sup>b</sup>5, E<sup>b</sup>5, D<sup>b</sup>5, C<sup>b</sup>5, B<sup>b</sup>4, A<sup>b</sup>4.

**D# Melodic Minor**

Two staves of musical notation for the D# Melodic Minor scale. The first staff shows the ascending scale: D#4, E4, F#4, G#4, A4, B4, C#5, D#5. The second staff shows the descending scale: D#5, C#5, B4, A4, G#4, F#4, E4, D#4.

**E<sup>b</sup> Melodic Minor**

Two staves of musical notation for the E<sup>b</sup> Melodic Minor scale. The first staff shows the ascending scale: E<sup>b</sup>4, F<sup>b</sup>4, G<sup>b</sup>4, A<sup>b</sup>4, B<sup>b</sup>4, C<sup>b</sup>5, D<sup>b</sup>5, E<sup>b</sup>5. The second staff shows the descending scale: E<sup>b</sup>5, D<sup>b</sup>5, C<sup>b</sup>5, B<sup>b</sup>4, A<sup>b</sup>4, G<sup>b</sup>4, F<sup>b</sup>4, E<sup>b</sup>4.

**A# Melodic Minor**



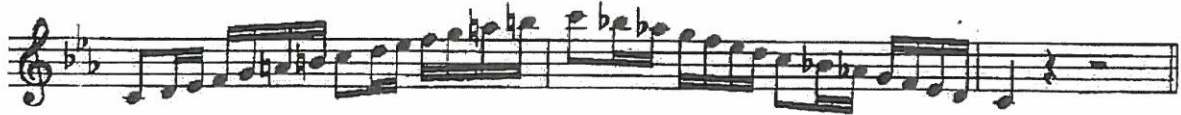
**Bb Melodic Minor**



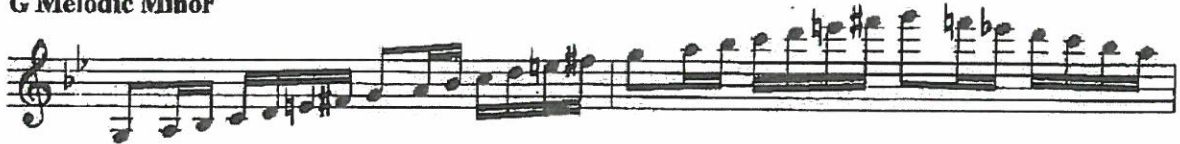
**F Melodic Minor**



**C Melodic Minor**



**G Melodic Minor**



**D Melodic Minor**



Thirty-two Etudes  
P. 17

Distorted

Adagio cantabile

17) dolce

cresc. - f

p cresc. - f p cresc.

sf dim. p p

mf p f p

poco f rit. large a tempo mf

f

tr. a tempo dimin. rit.

p

f p

p dolce

Thirty-two  
Etudes

26

Start

Allegro furioso

26

District End

State End

District End

State End

Klose p. 127

B Major Start

End B



Klose P. 128

Handwritten musical score for Klose P. 128, consisting of three staves of music. The notation is in treble clef and features a complex, rhythmic pattern of eighth and sixteenth notes, often grouped in beams. The first staff begins with a bracketed section labeled "Start". The third staff concludes with a bracketed section labeled "End". To the right of the staves, the text "Vst. cm" is written vertically, and "Stake" is written vertically at the bottom right.

Klose P. 129

Handwritten musical score for Klose P. 129, consisting of two staves of music. The notation is in treble clef and features a complex, rhythmic pattern of eighth and sixteenth notes, often grouped in beams. The first staff is numbered "8" and the second staff is numbered "9". The second staff concludes with a bracketed section labeled "End". There are several asterisks (\*) and other markings above the notes in both staves.