

# A Bunch o' Fun Tunes!

## Scooby Doo

Musical score for "Scooby Doo" in G major (one sharp) and 4/4 time. The score consists of four staves of music. The melody is characterized by a rhythmic pattern of eighth and quarter notes, with a key signature of one sharp (F#) and a time signature of 4/4. The piece concludes with a double bar line.

## Meet the Flintstones

Musical score for "Meet the Flintstones" in G major (one sharp) and 4/4 time. The score consists of three staves of music. The melody features a mix of quarter and eighth notes, with a key signature of one sharp (F#) and a time signature of 4/4. The piece concludes with a double bar line.

## Looney Tunes

Musical score for "Looney Tunes" in G major (one sharp) and 4/4 time. The score consists of three staves of music. The melody is primarily composed of eighth and quarter notes, with a key signature of one sharp (F#) and a time signature of 4/4. The piece concludes with a double bar line.

*Muppet Show*

Musical score for 'Muppet Show' in G major, 4/4 time. The score consists of five staves of music. The first four staves contain the main melody with various rhythmic patterns and rests. The fifth staff features a more complex melodic line with many beamed eighth notes and a final measure with a fermata over a whole note.

*Sesame Street (swing)*

Musical score for 'Sesame Street (swing)' in G major, 4/4 time. The score consists of two staves. The first staff begins with a treble clef and a key signature of one sharp (F#), and the second staff begins with a bass clef and a key signature of one flat (Bb). The melody is characterized by a swing feel and includes various rhythmic patterns.

*Rubber Ducky (swing)*

Musical score for 'Rubber Ducky (swing)' in G major, 4/4 time. The score consists of five staves of music. The first staff begins with a treble clef and a key signature of one sharp (F#). The melody is characterized by a swing feel and includes various rhythmic patterns and rests.

Spongebob Squarepants



Musical notation for the song 'Spongebob Squarepants'. It consists of three staves of music in 6/8 time. The first staff begins with a treble clef and a key signature of one sharp (F#). The melody is characterized by eighth and sixteenth notes, with a prominent eighth-note triplet in the first measure. The piece concludes with a double bar line.

Pokemon



Musical notation for the song 'Pokemon'. It consists of three staves of music in 4/4 time. The first staff begins with a treble clef and a key signature of one sharp (F#). The melody features a mix of quarter, eighth, and sixteenth notes, with several measures containing rests. The piece ends with a double bar line.

Super Mario Bros.



Musical notation for the song 'Super Mario Bros.'. It consists of five staves of music in 4/4 time. The first staff begins with a treble clef and a key signature of one sharp (F#). The melody is highly rhythmic, featuring many eighth and sixteenth notes. There are two instances of a triplet of eighth notes, each marked with a '3' and a bracket. The piece concludes with a double bar line.

*Legend of Zelda*

Musical score for the Legend of Zelda theme, featuring five staves of music in a 4/4 time signature with a key signature of two flats (B-flat and E-flat). The melody is characterized by a mix of eighth and quarter notes, with several triplet markings. The piece concludes with a double bar line.

*Oompa Loompa*

Musical score for the Oompa Loompa theme, featuring three staves of music in a 4/4 time signature with a key signature of one sharp (F#). The melody is primarily composed of eighth notes and quarter notes, with a rhythmic pattern that is characteristic of the game's music.

*He's A Pirate*

Musical score for the He's A Pirate theme, featuring two staves of music in a 3/4 time signature with a key signature of one sharp (F#). The melody is a simple, rhythmic tune consisting of eighth and quarter notes.

*Lord of the Rings*

Musical score for the Lord of the Rings theme, featuring two staves of music in a 4/4 time signature with a key signature of one sharp (F#). The melody is a simple, rhythmic tune consisting of eighth and quarter notes.

*Jurassic Park*

Musical score for 'Jurassic Park' in G major, 4/4 time. The piece consists of three staves of music. The first staff begins with a half note G4, followed by quarter notes A4 and B4, then a half note C5. The second staff continues with quarter notes D5, E5, F5, and G5, followed by quarter notes G5, F5, E5, and D5. The third staff concludes with quarter notes C5, B4, A4, and G4, ending with a double bar line.

*Raider's March*

Musical score for 'Raider's March' in G major, 4/4 time. The piece consists of three staves of music. The first staff starts with a whole rest, followed by quarter notes G4, A4, B4, and C5. The second staff continues with quarter notes D5, E5, F5, and G5, followed by quarter notes G5, F5, E5, and D5. The third staff concludes with quarter notes C5, B4, A4, and G4, ending with a double bar line.

*James Bond*

Musical score for 'James Bond' in G major, 4/4 time. The piece consists of four staves of music. The first staff begins with a half note G4, followed by quarter notes A4 and B4, then a half note C5. The second staff continues with quarter notes D5, E5, F5, and G5, followed by quarter notes G5, F5, E5, and D5. The third staff concludes with quarter notes C5, B4, A4, and G4, ending with a double bar line.

*The Pink Panther*

Musical notation for 'The Pink Panther' in 4/4 time, key of B-flat major. The piece features a melodic line with eighth and sixteenth notes, including a triplet of eighth notes. The bass line consists of a steady eighth-note accompaniment. The key signature has two flats (B-flat and E-flat).

*Soul Bossa Nova*

Musical notation for 'Soul Bossa Nova' in 4/4 time, key of B-flat major. The melody is a simple, rhythmic eighth-note pattern. The bass line features a consistent eighth-note accompaniment. The key signature has two flats (B-flat and E-flat).

*Mission Impossible*

Musical notation for 'Mission Impossible' in 5/4 time, key of D major. The melody is characterized by a rhythmic pattern of eighth and sixteenth notes with accents. The bass line provides a steady accompaniment. The key signature has two sharps (F# and C#).

*Rocky*

Musical notation for 'Rocky' in 4/4 time, key of D major. The melody is a rhythmic eighth-note pattern with a strong driving feel. The bass line features a consistent eighth-note accompaniment. The key signature has two sharps (F# and C#).

*Superman*

Musical notation for Superman in G major, 4/4 time. The melody features several triplet eighth notes. The piece concludes with a double bar line.

*Harry Potter*

Musical notation for Harry Potter in G major, 3/4 time. The melody is characterized by dotted rhythms and includes a key signature change to D major in the final measure. The piece concludes with a double bar line.

*Star Wars Main Theme*

Musical notation for Star Wars Main Theme in G major, 4/4 time. The melody is heavily rhythmic, featuring numerous triplet eighth notes. The piece concludes with a double bar line.

*Imperial March*

Musical notation for Imperial March in B-flat major, 4/4 time. The melody consists of eighth and quarter notes with a steady, marching rhythm. The piece concludes with a double bar line.

*May The Force Be With You*

Musical notation for 'May The Force Be With You' in 4/4 time. The melody features eighth and quarter notes with triplets of eighth notes. The piece concludes with a double bar line.

*Duel of the Fates*

Musical notation for 'Duel of the Fates' in 4/4 time. The piece consists of four staves of music. The first staff has a continuous eighth-note pattern. The second staff features a melodic line with slurs and accents. The third and fourth staves continue the melodic line with various rhythmic patterns and accents.

*Cantina Band*

Musical notation for 'Cantina Band' in 2/4 time. The piece consists of three staves of music. The first staff begins with a dynamic marking of *mf*. The melody is composed of quarter and eighth notes with various slurs and accents.

*Happy Birthday*

Musical notation for 'Happy Birthday' in 3/4 time. The melody is simple, consisting of quarter and eighth notes.

*Lollipop (swing)*

Musical notation for 'Lollipop (swing)' in 4/4 time. The piece consists of two staves of music. The first staff has a continuous eighth-note pattern. The second staff continues the pattern and includes a 'Pop!' dynamic marking.

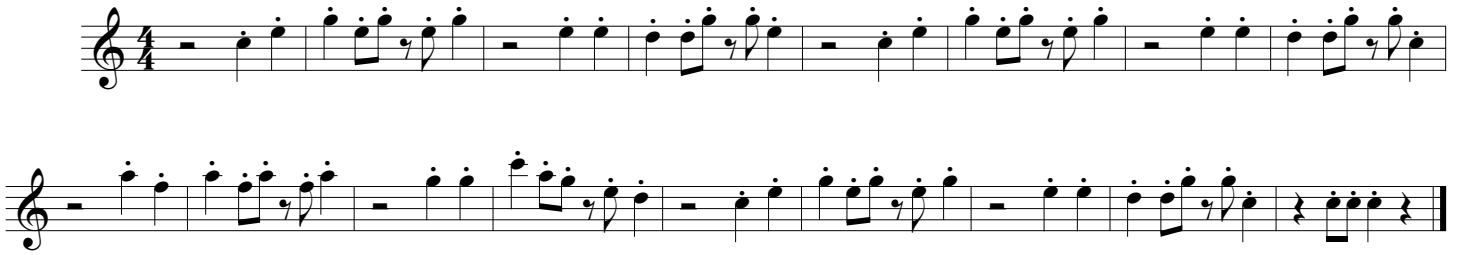
*Pop!*



*I'm a Little Teapot (swing)*



*Limbo Rock*



*Take Me Out to the Ballgame*



*Entry March of the Gladiators*



*Think Music (from Jeopardy)*



*Taps*



*Reveille*

Musical score for 'Reveille' in G major and 2/4 time. It consists of three staves of music. The first staff begins with a treble clef, a key signature of one sharp (F#), and a 2/4 time signature. The melody is characterized by eighth-note patterns and a final quarter rest.

*In the Hall of the Mountain King*

Musical score for 'In the Hall of the Mountain King' in G major and 4/4 time. It consists of three staves of music. The first staff begins with a treble clef, a key signature of one sharp (F#), and a 4/4 time signature. The piece features a driving eighth-note accompaniment and a melody with various rhythmic values, including accents and slurs.

*Linus and Lucy*

Musical score for 'Linus and Lucy' in G major and 4/4 time. It consists of three staves of music. The first staff begins with a treble clef, a key signature of one sharp (F#), and a 4/4 time signature. The melody is composed of eighth and quarter notes, with a final quarter rest.

*Beauty and the Beast*

Musical score for 'Beauty and the Beast' in F major and 4/4 time. It consists of two staves of music. The first staff begins with a treble clef, a key signature of one flat (F), and a 4/4 time signature. The melody features eighth-note patterns and a final quarter rest.

*We're Off to See the Wizard*

Musical notation for the song "We're Off to See the Wizard". It consists of three staves of music in treble clef, key of D major (one sharp), and 6/8 time signature. The melody is written on a single line of music.

*If I Only Had a Brain*

Musical notation for the song "If I Only Had a Brain". It consists of six staves of music in treble clef, key of D major (one sharp), and 4/4 time signature. The melody is written on a single line of music.

*Ding-Dong! The Witch is Dead*

Musical notation for the song "Ding-Dong! The Witch is Dead". It consists of four staves of music in treble clef, key of D major (one sharp), and 4/4 time signature. The melody is written on a single line of music.

*Somewhere Over the Rainbow*

Musical notation for the song 'Somewhere Over the Rainbow'. It consists of three staves of music in G major and 4/4 time. The first staff contains the main melody. The second staff features a rhythmic accompaniment of eighth notes. The third staff continues the melody and concludes with a double bar line.

*Do You Want to Build a Snowman?*

Musical notation for the song 'Do You Want to Build a Snowman?'. It consists of three staves of music in G major and 4/4 time. The first staff begins with a whole rest followed by the melody. The second staff continues the melody and includes a triplet of eighth notes. The third staff concludes the piece with a double bar line.

*Let It Go*

Musical notation for the song 'Let It Go'. It consists of three staves of music in G major and 4/4 time. The first staff starts with a whole rest followed by the melody. The second and third staves continue the melody and end with a double bar line.

*Spansih Flea*

Musical notation for the song 'Spansih Flea'. It consists of three staves of music in G major and 4/4 time. The first staff begins with a whole rest followed by the melody. The second and third staves continue the melody, featuring a triplet of eighth notes and ending with a double bar line.

*Happy*

Three staves of musical notation for the song 'Happy'. The first staff begins with a treble clef, a key signature of one sharp (F#), and a 4/4 time signature. The melody consists of eighth and quarter notes, with a repeat sign at the end of the first line. The second and third staves continue the melody with similar rhythmic patterns and a repeat sign at the end of the third staff.

*Dynamite*

Three staves of musical notation for the song 'Dynamite'. The first staff begins with a treble clef, a key signature of one flat (Bb), and a 4/4 time signature. The melody features a mix of eighth and quarter notes, with a repeat sign at the end of the first line. The second and third staves continue the melody with similar rhythmic patterns and a repeat sign at the end of the third staff.

*Don't Stop Believin'*

Three staves of musical notation for the song 'Don't Stop Believin''. The first staff begins with a treble clef, a key signature of one flat (Bb), and a 4/4 time signature. The melody consists of quarter and eighth notes, with a repeat sign at the end of the first line. The second and third staves continue the melody with similar rhythmic patterns and a repeat sign at the end of the third staff.

*Radioactive*

Three staves of musical notation for the song 'Radioactive'. The first staff begins with a treble clef, a key signature of one flat (Bb), and a 4/4 time signature. The melody consists of quarter and eighth notes, with a repeat sign at the end of the first line. The second and third staves continue the melody with similar rhythmic patterns and a repeat sign at the end of the third staff.