

MISSOURI BANDMASTERS ASSOCIATION MISSOURI ALL-STATE BAND AUDITION MATERIALS

OBOE & ENGLISH HORN*

Scale: All scales are to be MEMORIZED.
Prepare them all slurred and tongued in sixteenth notes at quarter note = 88.
Scales should be performed ascending and descending. Scales given are the starting tone. DO NOT TRANSPOSE.

All scales are to be prepared from required scale sheet as written.

Chromatic: Perform the chromatic exactly as written.

Major Scales: C G D A E B/Cb F#/Gb C#/Db Ab Eb Bb F

Minor Scales: a e b f# c# g#/ab d#/eb a#/bb f c g d

Books: *Selected Studies for Oboe - Voxman/Rubank Publication*
Advanced Method for Oboe, Vol. 1 - Voxman & Gower/Rubank Publication

Set I (2020-2021)	Selected Studies	p. 6	F Major
	Advanced Method	p. 6	#6
		p. 6	#7
		p. 6	#8
		p. 36-37	#20

Set II (2021-2022)	Selected Studies	p. 8	d minor
	Advanced Method	p. 7	#13
		p. 10	#28
		p. 10	#29
		p.23	#5

Set III (2022-2023)	Selected Studies	p. 21	b minor
	Advanced Method	p. 9	#27
		p. 11	#37
		p. 11	#38
		p. 35	#18

Set IV (2023-2024)	Selected Studies	p. 20	D Major
	Advanced Method	p. 17	#66
		p. 15	#58
		p. 15	#59
		p. 42	#24

*The use of English Horn is on an "as needed basis." Check at the All-State registration table to determine if the audition is needed.



MISSOURI ALL-STATE-BAND AUDITION SCALES

to be played at a minimum tempo of quarter note = 88

English Horn

Chromatic Scale

The Chromatic Scale is written on two staves in 4/4 time. The first staff shows the ascending scale from C4 to C5, and the second staff shows the descending scale from C5 to C4. The notes are: C, C#, D, D#, E, E#, F, F#, G, G#, A, A#, B, B#, C.

Missouri ASB Major Scales

C Major Scale

The C Major Scale is written on a single staff in 4/4 time, showing the ascending and descending scales. The notes are: C, D, E, F, G, A, B, C, B, A, G, F, E, D, C.

G Major Scale

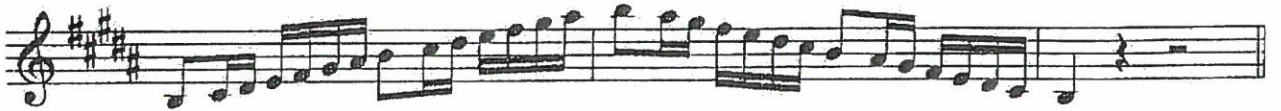
The G Major Scale is written on a single staff in 4/4 time, showing the ascending and descending scales. The notes are: G, A, B, C, D, E, F#, G, F#, E, D, C, B, A, G.

D Major Scale

The D Major Scale is written on a single staff in 4/4 time, showing the ascending and descending scales. The notes are: D, E, F#, G, A, B, C#, D, C#, B, A, G, F#, E, D.

A Major Scale

The A Major Scale is written on a single staff in 4/4 time, showing the ascending and descending scales. The notes are: A, B, C#, D, E, F#, G#, A, G#, F#, E, D, C#, B, A.

E Major Scale**B Major Scale****Cb Major Scale****F# Major Scale****Gb Major Scale****C# Major Scale****Db Major Scale**

Ab Major Scale



Eb Major Scale



Bb Major Scale

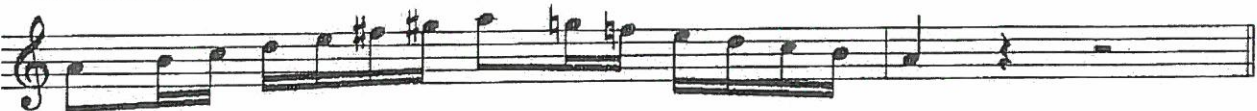


F Major Scale



Missouri ASB Melodic Minor Scales

A Melodic Minor

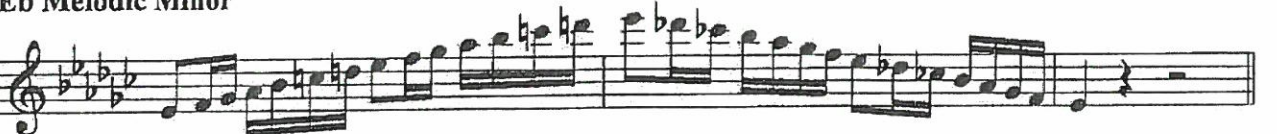


E Melodic Minor



B Melodic Minor



F# Melodic Minor**C# Melodic Minor****G# Melodic Minor****A \flat Melodic Minor****D# Melodic Minor****E \flat Melodic Minor****A# Melodic Minor**

Bb Melodic Minor



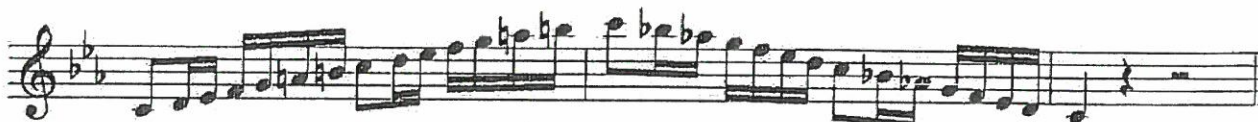
Musical notation for the Bb Melodic Minor scale, written in treble clef with a key signature of two flats (Bb and Eb). The scale consists of the following notes: Bb, C, Eb, F, G, Ab, Bb. The notation shows the scale ascending and then descending, ending with a double bar line.

F Melodic Minor



Musical notation for the F Melodic Minor scale, written in treble clef with a key signature of two flats (Bb and Eb). The scale consists of the following notes: F, G, Ab, Bb, C, D, Eb. The notation shows the scale ascending and then descending, ending with a double bar line.

C Melodic Minor



Musical notation for the C Melodic Minor scale, written in treble clef with a key signature of two flats (Bb and Eb). The scale consists of the following notes: C, D, Eb, F, G, Ab, Bb. The notation shows the scale ascending and then descending, ending with a double bar line.

G Melodic Minor



Musical notation for the G Melodic Minor scale, written in treble clef with a key signature of two flats (Bb and Eb). The scale consists of the following notes: G, A, Bb, C, D, Eb, F. The notation shows the scale ascending and then descending, ending with a double bar line.

D Melodic Minor



Musical notation for the D Melodic Minor scale, written in treble clef with a key signature of two flats (Bb and Eb). The scale consists of the following notes: D, E, F, G, Ab, Bb, C. The notation shows the scale ascending and then descending, ending with a double bar line.

ALL

Moderato

mf grazioso

p

mf

f animato

f second time p

p rit. mf a tempo

Distinct

mf

95 Oboe Thirds District: All

P. 17

66

95 Common chord District: All

A.M. P. 15

58

95 District: All
Diminished 7th chord

59

42 District

A.M. P. 42
NIEMANN

24

Allegro maestoso

f *mf* *f* *mf*

p cantabile

mf *p leggiero*

p *f* *p* *f*