

TENOR SAX.

MOAJE SWING ETUDE 3

COMP. AARON LEHDE

(BASED ON HAVE YOU MISS JONES)

$\text{♩} = 150$

mf

2 2

f

3

f

f

mf

mf

TENOR SAX.

MOAJE LATIN ETUDE 3

COMP. AARON LEHDE

(BASED ON ST. THOMAS)

LATIN $\text{♩} = 190$

5

9

13

17

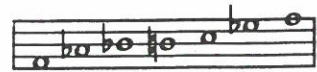
21

25

29

Bb

6. F BLUES



F BLUES SCALE

A MELODY

Dr. Jay

♩ = 120

Musical notation for Section A (Melody) in 4/4 time. The piece is in Bb major. The melody consists of three lines of music. Chords indicated above the staff are: F7, Bb7, F7, C-, F7, Bb7, Bb7, F7, A∅, D7+9, G-, C7, A-, D7, G-, C7. There are triplets and accents throughout the melody.

B Play 4 Choruses

Musical notation for Section B (4 Choruses) in 4/4 time. The piece is in Bb major. The notation shows four lines of music with chords: F7, Bb7, F7, C-, F7, Bb7, Bb7, F7, A∅, D7+9, G-, C7, A-, D7, G-, C7.

C Play 5 Choruses

Musical notation for Section C (5 Choruses) in 4/4 time. The piece is in Bb major. The notation shows five lines of music with chords: F7, Bb7, F7, C-, F7, Bb7, Bb7, F7, A∅, D7+9, G-, C7, A-, D7, G-, C7, Bb7, Bb7, F7, A∅, G-, A-, Ab-, G-, C7, A-, D7, G-, C7.

I GOT RHYTHM

B♭ INSTRUMENTS
HEAD

LISTEN AND ANALYZE HEAD

Track 15
JAZZ DEMO

PLAY THE HEAD

Track 16
PLAY ALONG

MUSIC AND LYRICS BY
GEORGE GERSHWIN
AND IRA GERSHWIN

MEDIUM UP-TEMPO SWING

1. 2. **TO CODA**

SOLO CHORD CHANGES - 2 CHORUSES
CREATE YOUR OWN IMPROVISATION

Track 16
PLAY ALONG

1. **AFTER LAST SOLO D.C. AL CODA**

CODA