

# MOAJE SET 3 SWING ETUDE

Keith Moyer  
Derek Limback

LEAD TRUMPET IN B $\flat$

MEDIUM SWING  $\text{♩} = 132$

5 *mf* *mp* *f*

9 *mp*

13

17 *mp*

21 *f* *mf*

25

29 *ff* *fp*

# MOAJE SET 3 SWING ETUDE

Keith Moyer

Derek Limback

SECTION TRUMPET IN B $\flat$

MEDIUM SWING  $\text{♩} = 132$

5 *mf* *f*

9 *mp*

13 *mp*

17 *mp*

21 *f* *mf*

25

29 *ff* *fp*

# MOAJE SET 3 LATIN ETUDE

LEAD TRUMPET IN B $\flat$

BASED ON ST. THOMAS

DEREK LIMBACK

LATIN  $\text{♩} = 190$

5 *mp*

9 *f*

13 *mf*

17 *mf*

21

25 *f*

29 *ff*

# MOAJE SET 3 LATIN ETUDE

DEREK LIMBACK

SECITON TRUMPET IN B $\flat$

BASED ON ST. THOMAS

LATIN  $\text{♩} = 190$

*mp*

5

9 *f*

13

17 *mf*

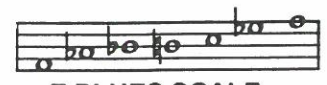
21

25 *f*

29 *ff*

B $\flat$

# 6. F BLUES



F BLUES SCALE

## A MELODY

Dr. Jay

$\text{♩} = 120$

Musical notation for the melody section, consisting of three staves. Chords are indicated above the notes: F7, B $\flat$ 7, F7, C-, F7, B $\flat$ 7, B $\flat$ 7, F7, A $\emptyset$ , D7+9, G-, C7, A-, D7, G-, C7.

## B Play 4 Choruses

Musical notation for the 4-chorus section, consisting of three staves. Chords are indicated above the notes: F7, B $\flat$ 7, F7, C-, F7, B $\flat$ 7, B $\flat$ 7, F7, A $\emptyset$ , D7+9, G-, C7, A-, D7, G-, C7.

## C Play 5 Choruses

Musical notation for the 5-chorus section, consisting of three staves. Chords are indicated above the notes: F7, B $\flat$ 7, F7, C-, F7, B $\flat$ 7, B $\flat$ 7, F7, A $\emptyset$ , D7+9, G-, C7, A-, D7, G-, C7.

# I GOT RHYTHM

8b INSTRUMENTS  
HEAD

LISTEN AND ANALYZE HEAD

Track 15  
JAZZ DEMO

PLAY THE HEAD

Track 16  
PLAY ALONG

MUSIC AND LYRICS BY  
GEORGE GERSHWIN  
AND IRA GERSHWIN

MEDIUM UP-TEMPO SWING

Musical notation for the head of the piece, including a first ending and a coda. The notation is in 4/4 time and features a melody with eighth and quarter notes. A first ending is marked with '1.' and a second ending with '2.'. A coda is marked with 'TO CODA' and a diamond symbol.

SOLO CHORD CHANGES - 2 CHORUSES  
CREATE YOUR OWN IMPROVISATION

Track 16  
PLAY ALONG

Musical notation for solo chord changes, including two choruses and a coda. The notation is in 4/4 time and features a series of chords: C, Dmi7, G7, C, Dmi7, G7, C7, F7, Bb7, C, Dmi7, G7. The first chorus is marked with '1.' and the second with '2.'. A coda is marked with 'AFTER LAST SOLO D.C. AL CODA' and a diamond symbol.

CODA

Musical notation for the coda, featuring a melody with eighth and quarter notes, ending with a final chord.

© 1930 WB MUSIC CORP. (Renewed)  
This Arrangement © 1999 WB MUSIC CORP.  
All Rights Reserved