

BARITONE SAX.

MOAJE LATIN ETUDE 3

COMP. AARON LEHDE

(BASED ON ST. THOMAS)

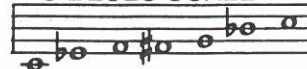
LATIN $\text{♩} = 190$

17

E_b

6. C BLUES

C BLUES SCALE



A MELODY

Dr. Jay

♩ = 120

Chords: C7, F7, C7, G-, C7, F7, F7, C7, EØ, A7+9, D-, G7, E-, A7, D-, G7.

B Play 4 Choruses

Chords: C7, F7, C7, G-, C7, F7, F7, C7, EØ, A7+9, D-, G7, E-, A7, D-, G7.

C Play 5 Choruses

Chords: C7, F7, C7, G-, C7, F7, F#Ø7, CA, D-, E-, Eb-, D-, G7, E-, A7, D-, G7.

I GOT RHYTHM

E♭ INSTRUMENTS
HEAD

LISTEN AND ANALYZE HEAD



Track 15
JAZZ DEMO

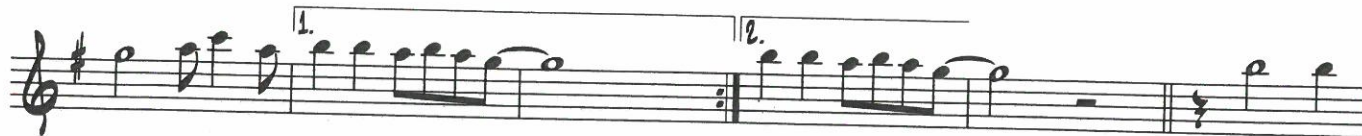
PLAY THE HEAD



Track 16
PLAY ALONG

MUSIC AND LYRICS BY
GEORGE GERSHWIN
AND IRA GERSHWIN

MEDIUM UP-TEMPO SWING



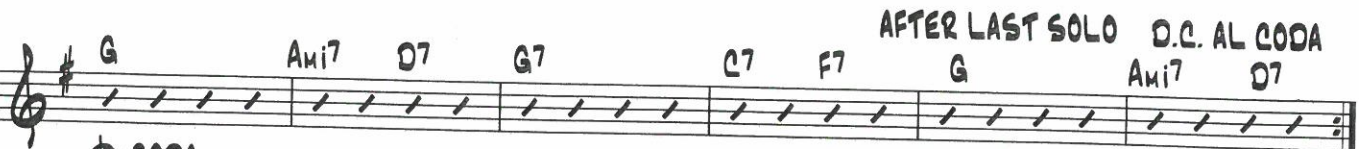
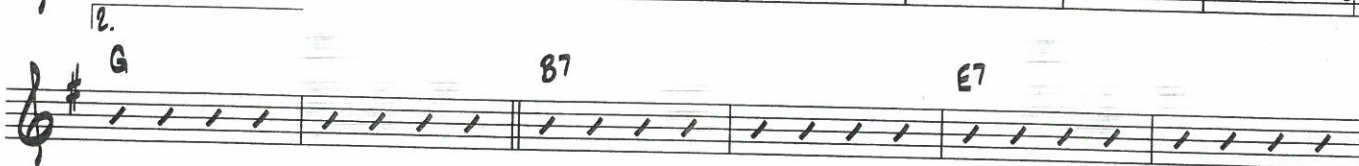
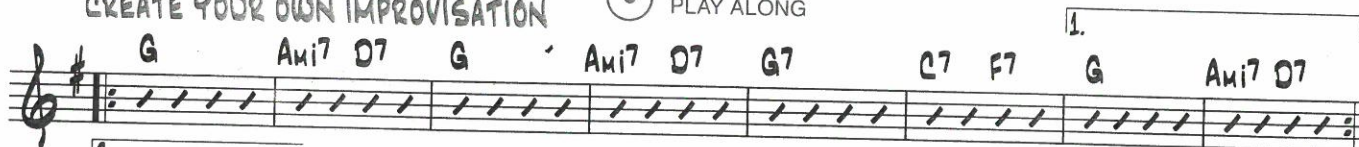
TO CODA



SOLO CHORD CHANGES - 2 CHORUSES
CREATE YOUR OWN IMPROVISATION



Track 16
PLAY ALONG



AFTER LAST SOLO D.C. AL CODA

CODA

