

# MISSOURI BANDMASTERS ASSOCIATION

## MISSOURI ALL-STATE BAND AUDITION MATERIALS

Bb BASS CLARINET

Sets II, III, IV

Scale: All scales are to be MEMORIZED.  
 Prepare them all slurred and tongued in sixteenth notes at quarter note = 88.  
 Scales should be performed ascending and descending. Scales given are the starting tone. DO NOT TRANSPOSE.

All scales are to be prepared from required scale sheet as written.

Chromatic: Perform the chromatic exactly as written.

Major Scales: C G D A E B/Cb F#/Gb C#/Db Ab Eb Bb F

Minor Scales: a e b f# c# g#/ab d#/eb a#/bb f c g d

Books: *21 Foundation Studies for Alto and Bass Clarinet – Wm. Rhoads/Southern Pub.*  
 (Older edition of this book = page number different by minus 2)  
*Introducing the Alto or Bass Clarinet – Voxman/Rubank Publication*

Set I (2020-21)	21 Foundation Studies	p. 29	#19
--------------------	-----------------------	-------	-----

Introducing	p. 14	#5
	p. 22	#3
	p. 24	#3
	p. 36	#5

Set II (2021-22)	21 Foundation Studies	p. 32	#21
---------------------	-----------------------	-------	-----

Introducing	p. 9	#4
	p. 17	#5
	p. 26-27	#5
	p. 37	#3

Set III (2022-23)	21 Foundation Studies	p. 21	#13
----------------------	-----------------------	-------	-----

Introducing	p. 11	#1
	p. 12	#5
	p. 15	#4
	p. 42	Pastorale

Set IV (2023-24)	21 Foundation Studies	p. 16	#9
---------------------	-----------------------	-------	----

Introducing	p. 13	#5
	p. 16	#5
	p. 20	#6
	p. 36	#2 slurred



# MISSOURI ALL-STATE-BAND AUDITION SCALES

to be played at a minimum tempo of quarter note = 88

Bb Bass Clarinet

## Chromatic Scale

The chromatic scale is presented in three staves. The first staff shows the ascending scale from C4 to C5. The second staff shows the descending scale from C5 to C4. The third staff shows the scale starting on B3, ascending to B4, and then descending to B3. The notation includes sharp and flat accidentals to indicate the correct pitch for each chromatic step.

## Missouri ASB Major Scales

### C Major Scale

The C Major scale is written on a single staff in 4/4 time. It begins with a treble clef and a key signature of one sharp (F#). The scale is played in eighth notes, ascending and then descending.

### G Major Scale

The G Major scale is written on a single staff in 4/4 time. It begins with a treble clef and a key signature of two sharps (F# and C#). The scale is played in eighth notes, ascending and then descending.

### D Major Scale

The D Major scale is written on a single staff in 4/4 time. It begins with a treble clef and a key signature of two sharps (F# and C#). The scale is played in eighth notes, ascending and then descending.

**A Major Scale****E Major Scale****B Major Scale****Cb Major Scale****F# Major Scale****Gb Major****C# Major Scale**

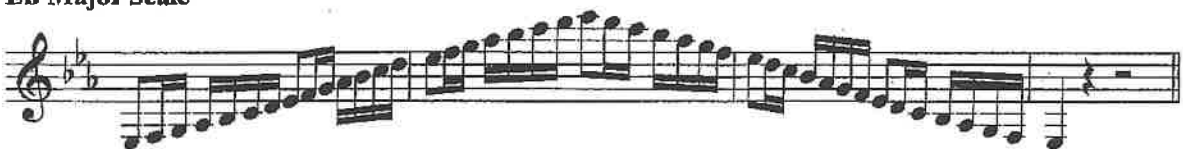
**Db Major Scale**



**Ab Major Scale**



**Eb Major Scale**



**Bb Major Scale**



**F Major Scale**



Missouri ASB Melodic Minor Scales

**A Melodic Minor**

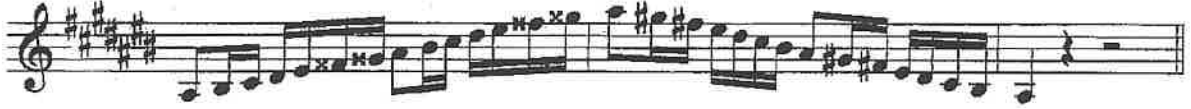


**E Melodic Minor**



**B Melodic Minor****F# Melodic Minor****C# Melodic Minor****G# Melodic Minor****A $\flat$  Melodic Minor****D# Melodic Minor****E $\flat$  Melodic Minor**

**A# Melodic Minor**



**Bb Melodic Minor**



**F Melodic Minor**



**C Melodic Minor**



**G Melodic Minor**



**D Melodic Minor**



All of this  
one

*esp. esp.*  
9

Allegro non troppo

DOTZAUER

*p*

*cresc.*

*mf*

*dim.*

*p*

*cresc.*

*mf*

(9)

(17)

*cresc.*

(25)

*dim.*

*p*

*dim. rall.*

# Studies in A Minor

## Harmonic Minor Scale

1

## Melodic Minor Scale

2

3

## PETITE ROMANCE

SCHUMANN

Not too quickly (♩ = 96)

The abbreviation *fp* (*forte piano*) means an accented note followed by an immediate *piano*.

4

## ETUDE IN A MINOR

Adagio

45/10/05  
Cadenza  
Kottwitz

5



# Studies in G Major

1 Scale

2 Scale in Thirds

3 Arpeggio

## EXCERPT FROM SONATA, Op. 49, No. 2

BEETHOVEN

4 Tempo di minuetto

## SYNCOPIATION IN C



5 Moderato  
Practice first in 4/4

# Studies in B $\flat$ Major

1 Preparatory Studies

2 Scale

3 Scale in Thirds

4 Arpeggio

5 Andante con moto

*f marcato* *p*

*cresc.* *riten. f*

## ARPEGGIO STUDY



6 Moderato

*mf* *p* *f*

# Studies in A $\flat$ Major

Scale

1

*Slurred*  
Scale in Thirds

2

Arpeggio

3

Andante

4

*with a full tone*

Poco lento