

Poplar Bluff Sho-Me Band Warm-Ups 2021

Sousaphone

A 9 Count Tones on F Concert

Winters

11

22

B Remington Exercise #1

32

41

C Remington Exercise #2

©

2

Poplar Bluff Sho-Me Band Warm-Ups 2021

57

D Flexibility Exercise

65

72

E Rhythm Exercise

81

89

Rhythm 2

Rhythm 3 (m. 22)

97 Rhythm 4 (m. 53)

Musical staff for Rhythm 4 (m. 53) in 2/4 time, featuring eighth and sixteenth notes with accents.

103 Rhythm 6 (m. 101) [F] Unison Tuning

Musical staff for Rhythm 6 (m. 101) in 2/4 time, featuring eighth notes with accents. A box labeled 'F' indicates the key signature.

112

Musical staff for Unison Tuning, showing a sequence of notes with slurs and ties.

123 [G] Scale Tuning

Musical staff for Scale Tuning, showing a sequence of notes with slurs and ties.

134 [H] Chord Tuning

Musical staff for Chord Tuning, showing a sequence of notes with slurs and ties.

145

Musical staff for Chord Tuning continuation, showing a sequence of notes with slurs and ties.

[I] Power Chords

136

Musical staff for Power Chords, showing a sequence of notes with slurs and ties. Dynamic marking *mf*.

167

Musical staff for Power Chords continuation, showing a sequence of notes with slurs and ties. Dynamic marking *f*.

[J] Fundamental Tuning Exercise

177

Musical staff for Fundamental Tuning Exercise, showing a sequence of notes with slurs and ties. Dynamic marking *ff*.

186

Musical staff for Fundamental Tuning Exercise continuation, showing a sequence of notes with slurs and ties.

[K] Fire Of Eternal Glory

197

Musical staff for Fire Of Eternal Glory, showing a sequence of notes with slurs and ties. Dynamic marking *mf*.

207

Musical staff for Fire Of Eternal Glory continuation, showing a sequence of notes with slurs and ties. Dynamic markings *f* and *ff*.

216

ff

224

232

M Be Thou My Vision

241

N Faith of Our Fathers

251

262



MISSOURI ALL-STATE-BAND AUDITION SCALES

to be played at a minimum tempo of quarter note = 88

Tuba

Chromatic Scale

Two staves of musical notation for a chromatic scale in 4/4 time. The first staff shows the ascending scale from C2 to C3, and the second staff shows the descending scale from C3 to C2. The notes are: C2, C#2, D2, D#2, E2, E#2, F2, F#2, G2, G#2, A2, A#2, B2, B#2, C3.

Missouri ASB Major Scales

C Major Scale

#3

Single staff of musical notation for the C Major Scale in 4/4 time, starting on C2 and ending on C3.

G Major Scale

#4

Single staff of musical notation for the G Major Scale in 4/4 time, starting on G2 and ending on G3.

D Major Scale

#5

Single staff of musical notation for the D Major Scale in 4/4 time, starting on D2 and ending on D3.

A Major Scale

#6

Single staff of musical notation for the A Major Scale in 4/4 time, starting on A2 and ending on A3.

E Major Scale

#7

Musical notation for the E Major Scale in bass clef. The key signature has three sharps (F#, C#, G#). The scale is written in a single line with a treble clef-like staff. It starts on E2 and ends on E3, with a final whole note rest.

B Major Scale

#8

Musical notation for the B Major Scale in bass clef. The key signature has two sharps (F#, C#). The scale is written in a single line with a treble clef-like staff. It starts on B1 and ends on B2, with a final whole note rest.

Cb Major Scale

#8

Musical notation for the Cb Major Scale in bass clef. The key signature has four flats (Bb, Eb, Ab, Db). The scale is written in a single line with a treble clef-like staff. It starts on Cb1 and ends on Cb2, with a final whole note rest.

F# Major Scale

#9

Musical notation for the F# Major Scale in bass clef. The key signature has three sharps (F#, C#, G#). The scale is written in a single line with a treble clef-like staff. It starts on F#1 and ends on F#2, with a final whole note rest.

Gb Major Scale

#9

Musical notation for the Gb Major Scale in bass clef. The key signature has four flats (Bb, Eb, Ab, Db). The scale is written in a single line with a treble clef-like staff. It starts on Gb1 and ends on Gb2, with a final whole note rest.

C# Major Scale

#10

Musical notation for the C# Major Scale in bass clef. The key signature has three sharps (F#, C#, G#). The scale is written in a single line with a treble clef-like staff. It starts on C#1 and ends on C#2, with a final whole note rest.

Db Major Scale

#10

Musical notation for the Db Major Scale in bass clef. The key signature has four flats (Bb, Eb, Ab, Db). The scale is written in a single line with a treble clef-like staff. It starts on Db1 and ends on Db2, with a final whole note rest.

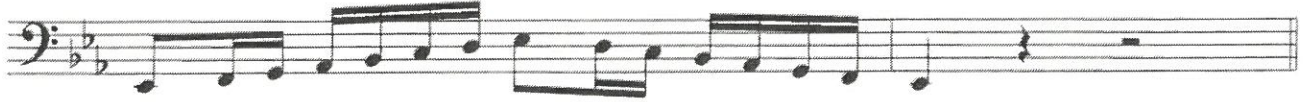
Ab Major Scale

#11



Eb Major Scale

#12



Bb Major Scale

#1



F Major Scale

#2



Missouri ASB Melodic Minor Scales

A Melodic Minor

#3



E Melodic Minor

#4



B Melodic Minor

#5



F# Melodic Minor

#6

Musical notation for the F# Melodic Minor scale in bass clef. The scale is written in a single line with a key signature of two sharps (F# and C#). The notes are: F#, G, A, B, C#, D, E, F#. The scale is played in an ascending and descending pattern over two measures.

C# Melodic Minor

#7

Musical notation for the C# Melodic Minor scale in bass clef. The scale is written in a single line with a key signature of three sharps (F#, C#, and G#). The notes are: C#, D, E, F#, G, A, B, C#. The scale is played in an ascending and descending pattern over two measures.

G# Melodic Minor

#8

Musical notation for the G# Melodic Minor scale in bass clef. The scale is written in a single line with a key signature of four sharps (F#, C#, G#, and D#). The notes are: G#, A, B, C#, D, E, F#, G#. The scale is played in an ascending and descending pattern over two measures.

A^b Melodic Minor

#8

Musical notation for the A^b Melodic Minor scale in bass clef. The scale is written in a single line with a key signature of three flats (B^b, E^b, and A^b). The notes are: A^b, B^b, C, D, E^b, F, G, A^b. The scale is played in an ascending and descending pattern over two measures.

D# Melodic Minor

#9

Musical notation for the D# Melodic Minor scale in bass clef. The scale is written in a single line with a key signature of four sharps (F#, C#, G#, and D#). The notes are: D#, E, F, G, A, B, C#, D#. The scale is played in an ascending and descending pattern over two measures.

E^b Melodic Minor

#9

Musical notation for the E^b Melodic Minor scale in bass clef. The scale is written in a single line with a key signature of four flats (B^b, E^b, A^b, and D^b). The notes are: E^b, F, G, A, B^b, C, D, E^b. The scale is played in an ascending and descending pattern over two measures.

A# Melodic Minor

#10

Musical notation for the A# Melodic Minor scale in bass clef. The scale is written in a single line with a key signature of five sharps (F#, C#, G#, D#, and A#). The notes are: A#, B, C, D, E, F#, G, A#. The scale is played in an ascending and descending pattern over two measures.

Bb Melodic Minor

#10



F Melodic Minor

#11



C Melodic Minor

#12



G Melodic Minor

#1



D Melodic Minor

#2

