

In loving memory of Larry Pohlman, whose vision and dedication led to the creation of the Missouri All-State Band.



Baritone (Treble Clef)
Set 3

Audition Repertoire:

All scales to be performed at a minimum of ♩=88 and prepared slurred and tongued.

Chromatic Scale - ♩=88

Major Scales - ♩=88

Melodic Minor Scales - ♩=88

Etude #1 - ♩=80-100

Etude #2 - ♩= 100 or higher

Etude #3 - ♩=70-80

Etude #4 - Allegro Maestoso, ♩=100-120



** District cuts are bracketed*

Baritone (Treble Clef) - Set 3

Chromatic Scale

Two staves of musical notation for a chromatic scale. The first staff shows an ascending scale from C4 to C5. The second staff shows a descending scale from C5 to C4. The notes are: C, C#, D, D#, E, E#, F, F#, G, G#, A, A#, B, B#, C.

Major Scales

C Major

Ascending and descending musical notation for the C Major scale in treble clef, 4/4 time.

F Major

Ascending and descending musical notation for the F Major scale in treble clef, 4/4 time.

Bb Major

Ascending and descending musical notation for the Bb Major scale in treble clef, 4/4 time.

Eb Major

Ascending and descending musical notation for the Eb Major scale in treble clef, 4/4 time.

Ab Major

Ascending and descending musical notation for the Ab Major scale in treble clef, 4/4 time.

Db Major

Ascending and descending musical notation for the Db Major scale in treble clef, 4/4 time.

Gb Major

Ascending and descending musical notation for the Gb Major scale in treble clef, 4/4 time.

Cb Major

Ascending and descending musical notation for the Cb Major scale in treble clef, 4/4 time.

C# Major

Ascending and descending musical notation for the C# Major scale in treble clef, 4/4 time.

F# Major

Ascending and descending musical notation for the F# Major scale in treble clef, 4/4 time.



B Major

E Major

A Major

D Major

G Major

Melodic Minor Scales

A Melodic Minor

D Melodic Minor

G Melodic Minor

C Melodic Minor

F Melodic Minor

Bb Melodic Minor

Eb Melodic Minor



Ab Melodic Minor

A# Melodic Minor

D# Melodic Minor

G# Melodic Minor

C# Melodic Minor

F# Melodic Minor

B Melodic Minor

E Melodic Minor



Etude #1

Bb Major



E Major

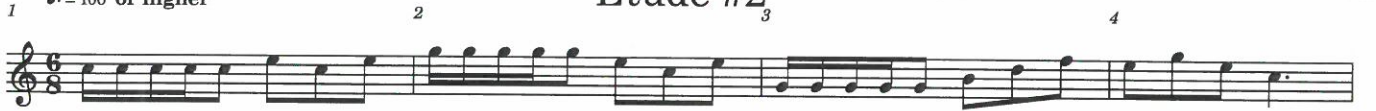


G Major



Etude #2

♩ = 100 or higher





Etude #3

♩ = 70-80

39

40

41

42

Musical score for Etude #3, measures 39-54. The piece is in 2/4 time with a tempo of 70-80. It begins with a piano (*p*) dynamic. The melody consists of eighth and sixteenth notes, often beamed together. There are several slurs and accents throughout. Measure numbers 39, 40, 41, 42, 43, 44, 45, 46, 47, 48, 49, 50, 51, 52, 53, and 54 are indicated above the staff.

Allegro Maestoso 100-120

Etude #4

9

10

12

Musical score for Etude #4, measures 9-49. The piece is in 2/4 time with a tempo of Allegro Maestoso (100-120). It begins with a mezzo-forte (*mf*) dynamic. The melody is more rhythmic, featuring eighth and sixteenth notes. There are various dynamics and markings: *mf*, *dolce*, *rall.*, *cresc. poco a poco*, *Piu mosso*, *ff*, *p*, and *rit.*. Measure numbers 9, 10, 11, 12, 13, 14, 15, 16, 17, 18, 19, 20, 21, 22, 23, 24, 25, 26, 27, 28, 29, 30, 31, 32, 33, 34, 35, 36, 37, 38, 39, 40, 41, 42, 43, 44, 45, 46, 47, 48, and 49 are indicated above the staff.

Etude #1: The Complete Method for Trombone and Euphonium - Arban,
#69 lines 3, 9, and 11

Etude #2: The Complete Method for Trombone and Euphonium - Arban, #142

Etude #3: Fantaisie and Variations on the Cavatina - J.B. Arban, 38-55

Etude #4: No. 3 Fantaisie Brillante - J.B. Arban, mm. 9-49

MBA gratefully recognizes the contributions of Brad Heckman and Joey Carter in preparing the audition materials, as well as the leadership of President-Elect Julie Swope in coordinating their development.

Their dedication, effort, and collaboration are sincerely appreciated.