

Flute

Poplar Bluff Sho-Me Band Warm-Ups 2021

Winters

A 9 Count Tones on F Concert

B Remington Exercise #1

C Remington Exercise #2

©

Poplar Bluff Sho-Me Band Warm-Ups 2021

D Flexibility Exercise

E Rhythm Exercise

Rhythm 2

Rhythm 3 (m. 22)

Rhythm 4 (m. 53) Poplar Bluff Sho-Me Band Warm-Ups 2021 Rhythm 5 (m. 65) 3

Rhythm 6 (m. 101) F Unison Tuning *fff*

G Scale Tuning

H Chord Tuning

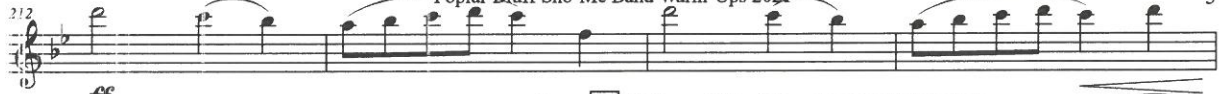
Poplar Bluff Sho-Me Band Warm-Ups 2021

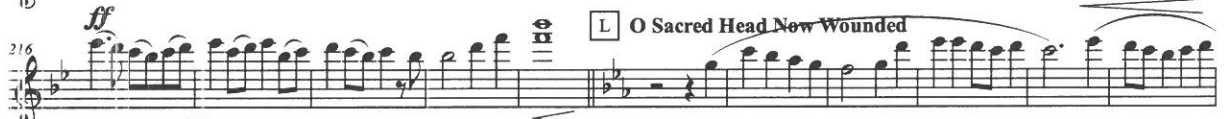
I Power Chords

mf *f* Fundamental Tuning Exercise J *ff*

K Fire Of Eternal *mf*

f

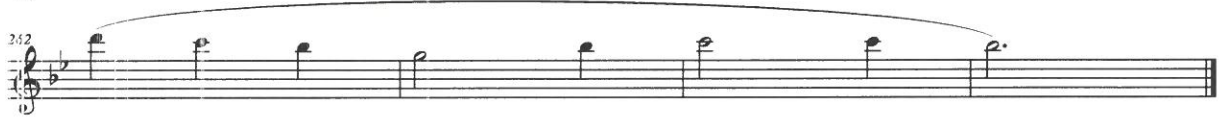
212 

216 *ff*  **L** O Sacred Head Now Wounded

217 *ff*  **M** Be Thou My Vision

240  **N** Faith of Our Fathers

251 

252 



MISSOURI ALL-STATE-BAND AUDITION SCALES

to be played at a minimum tempo of quarter note = 88

Flute

Chromatic Scale

Missouri ASB Major Scales

C Major Scale

#3

G Major Scale

#4

D Major Scale

#5

A Major Scale

#6

E Major Scale

#7

Musical notation for the E Major Scale in treble clef. The key signature has three sharps (F#, C#, G#). The scale is written in a single line with a treble clef, starting on E4 and ending on E5. The notes are: E4, F#4, G#4, A4, B4, C#5, D5, E5. The scale is played in a single line with a treble clef, starting on E4 and ending on E5. The notes are: E4, F#4, G#4, A4, B4, C#5, D5, E5.

B Major Scale

#8

Musical notation for the B Major Scale in treble clef. The key signature has two sharps (F#, C#). The scale is written in a single line with a treble clef, starting on B4 and ending on B5. The notes are: B4, C#5, D5, E5, F#5, G#5, A5, B5.

Cb Major Scale

#8

Musical notation for the Cb Major Scale in treble clef. The key signature has seven flats (Bb, Eb, Ab, Db, Gb, Cb, Fb). The scale is written in a single line with a treble clef, starting on Cb5 and ending on Cb6. The notes are: Cb5, Bb5, Ab5, Gb5, Fb5, Eb5, Db5, Cb6.

F# Major Scale

#9

Musical notation for the F# Major Scale in treble clef. The key signature has three sharps (F#, C#, G#). The scale is written in a single line with a treble clef, starting on F#4 and ending on F#5. The notes are: F#4, G#4, A4, B4, C#5, D5, E5, F#5.

Gb Major Scale

#9

Musical notation for the Gb Major Scale in treble clef. The key signature has six flats (Bb, Eb, Ab, Db, Gb, Cb). The scale is written in a single line with a treble clef, starting on Gb4 and ending on Gb5. The notes are: Gb4, Fb4, Eb4, Db4, Cb4, Bb4, Ab4, Gb5.

C# Major Scale

#10

Musical notation for the C# Major Scale in treble clef. The key signature has four sharps (F#, C#, G#, D#). The scale is written in a single line with a treble clef, starting on C#4 and ending on C#5. The notes are: C#4, D#4, E4, F#4, G#4, A4, B4, C#5.

Db Major Scale

#10

Musical notation for the Db Major Scale in treble clef. The key signature has five flats (Bb, Eb, Ab, Db, Gb). The scale is written in a single line with a treble clef, starting on Db4 and ending on Db5. The notes are: Db4, Cb4, Bb4, Ab4, Gb4, Fb4, Eb4, Db5.

Ab Major Scale

#11

Musical notation for the Ab Major Scale in treble clef. The key signature has four flats (Bb, Eb, Ab, Db). The scale is written in a single line with a treble clef, starting on Ab4 and ending on Ab5. The notes are: Ab4, Gb4, Fb4, Eb4, Db4, Cb4, Bb4, Ab5.

E_b Major Scale

#12

Musical notation for the E_b Major Scale. It consists of a single staff in treble clef with a key signature of two flats (B_b and E_b). The scale is written in eighth notes, ascending and then descending, with a final whole note rest.

B_b Major Scale

#1

Musical notation for the B_b Major Scale. It consists of a single staff in treble clef with a key signature of two flats (B_b and E_b). The scale is written in eighth notes, ascending and then descending, with a final whole note rest.

F Major Scale

#2

Musical notation for the F Major Scale. It consists of a single staff in treble clef with a key signature of one flat (B_b). The scale is written in eighth notes, ascending and then descending, with a final whole note rest.

Missouri ASB Melodic Minor Scales

A Melodic Minor

#3

Musical notation for the A Melodic Minor Scale. It consists of a single staff in treble clef with a key signature of no sharps or flats. The scale is written in eighth notes, ascending and then descending, with a final whole note rest.

E Melodic Minor

#4

Musical notation for the E Melodic Minor Scale. It consists of a single staff in treble clef with a key signature of one sharp (F_#). The scale is written in eighth notes, ascending and then descending, with a final whole note rest.

B Melodic Minor

#5

Musical notation for the B Melodic Minor Scale. It consists of a single staff in treble clef with a key signature of two sharps (F_# and C_#). The scale is written in eighth notes, ascending and then descending, with a final whole note rest.

F_# Melodic Minor

#6

Musical notation for the F_# Melodic Minor Scale. It consists of a single staff in treble clef with a key signature of three sharps (F_#, C_#, and G_#). The scale is written in eighth notes, ascending and then descending, with a final whole note rest.

C# Melodic Minor

#7

**G# Melodic Minor**

#8

**A♭ Melodic Minor**

#8

**D# Melodic Minor**

#9

**E♭ Melodic Minor**

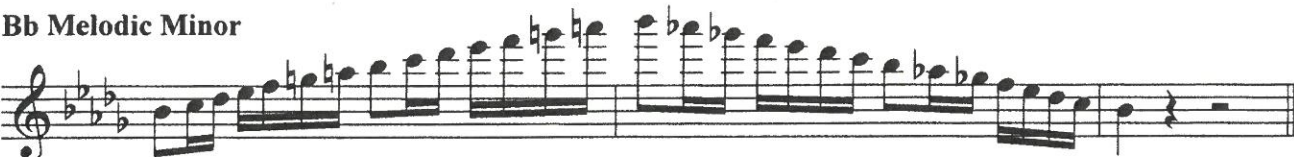
#9

**A# Melodic Minor**

#10

**B♭ Melodic Minor**

#10

**F Melodic Minor**

#11



C Melodic Minor

#12

Musical notation for the C Melodic Minor scale. The scale is written on a single staff in treble clef with a key signature of two flats (Bb and Eb). The notes are: C4, D4, Eb4, F4, G4, Ab4, Bb4, C5. The scale is played in an ascending and descending pattern with slurs and accents.

G Melodic Minor

#1

Musical notation for the G Melodic Minor scale. The scale is written on a single staff in treble clef with a key signature of one flat (Bb). The notes are: G4, A4, Bb4, C5, D5, Eb5, F5, G5. The scale is played in an ascending and descending pattern with slurs and accents.

D Melodic Minor

#2

Musical notation for the D Melodic Minor scale. The scale is written on a single staff in treble clef with a key signature of two flats (Bb and Eb). The notes are: D4, E4, F4, G4, Ab4, Bb4, C5, D5. The scale is played in an ascending and descending pattern with slurs and accents.