

PIANO

MOAJE SWING ETUDE 3

COMP. ERIC WARREN

(BASED ON HAVE YOU MISS JONES)

♩=150

PIANO

PNO.

9

F MAJ⁷ A MIN⁷ D^{7(b9)} G MIN⁷ C⁷

PNO. COMP

A MIN D MIN C MIN⁷ F⁷

PNO. 13

MOAJE SWING ETUDE 3

2
17

B^bMAJ⁷

A^bMIN⁷

D^b7

G^bMAJ⁷

E MIN⁷

A⁷

PNO.

D MAJ⁷

A^bMIN⁷

D^b7

G^bMAJ⁷

G MIN⁷

C⁷

PNO.

25

F MAJ⁷

A MIN⁷

D 7(b9)

G MIN⁷

C⁷

PNO.

A MIN⁹

D 7+5

G MIN⁷

C 7+5

F MAJ⁷

PNO.

PIANO

MOAJE LATIN ETUDE 3

(BASED ON ST. THOMAS)

COMP. ERIC WARREN

LATIN ♩=190

PIANO

PNO.

PNO.

PNO.

17

C^b

E^{MIN}7

A⁷

D^{MIN}7

G⁷

C^b

PNO.

C^b

E^{MIN}7

A⁷

D^{MIN}7

G⁷

C^b

PNO.

E^{MIN}7(b5)

A⁷

D^{MIN}7

G⁷

PNO.

C⁷

C⁹/E

F^b

F[#]DIM⁷

C^b/G

G⁷

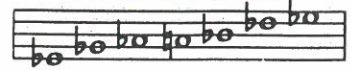
C^b

PNO.



6. Eb BLUES

Eb BLUES SCALE



A MELODY

Dr. Jay

♩ = 120

Melody notation for Dr. Jay in 4/4 time. The piece consists of three staves of music. The first staff contains measures 1-4 with chords Eb7, Ab7, Eb7, Bb-, and Eb7. The second staff contains measures 5-8 with chords Ab7, Ab7, Eb7, GØ, and C7+9. The third staff contains measures 9-12 with chords F-, Bb7, G-, C7, F-, and Bb7. The melody features eighth and sixteenth notes, often beamed together, with some triplets and accents.

B Play 4 Choruses

Four choruses of the Eb Blues scale. Each chorus consists of two staves of music. The first staff of each chorus contains measures 1-4 with chords Eb7, Ab7, Eb7, Bb-, and Eb7. The second staff contains measures 5-8 with chords Ab7, Ab7, Eb7, GØ, and C7+9. The third staff contains measures 9-12 with chords F-, Bb7, G-, C7, F-, and Bb7.

C Play 5 Choruses

Five choruses of the Eb Blues scale. Each chorus consists of two staves of music. The first staff of each chorus contains measures 1-4 with chords Eb7, Ab7, Eb7, Bb-, and Eb7. The second staff contains measures 5-8 with chords Ab7, AØ7, EbΔ, F-, G-, and F#-. The third staff contains measures 9-12 with chords F-, Bb7, G-, C7, F-, and Bb7.

I GOT RHYTHM

PIANO

LISTEN AND ANALYZE HEAD



Track 15
JAZZ DEMO

PLAY THE HEAD



Track 16
PLAY ALONG

MUSIC AND LYRICS BY
GEORGE GERSHWIN
AND IRA GERSHWIN

MEDIUM UP-TEMPO SWING

Bb Cm7 F7 Bb

Cm7 F7 Bb7 Eb7 Ab7

1. Bb Cm7 F7 2. Bb

D7 G7

Handwritten musical notation for the first system. It consists of two staves: a treble clef staff and a bass clef staff. The key signature has two flats (Bb and Eb). The first measure has a whole note chord D7 in the treble and a whole note chord Eb in the bass. The second measure has a quarter note G4 in the treble and a quarter note Eb3 in the bass, followed by a quarter rest in the treble and a quarter note G4 in the bass. The third measure has a whole rest in both staves. The fourth measure has a whole note chord G7 in the treble and a whole note chord Eb in the bass.

C7 F7

Handwritten musical notation for the second system. It consists of two staves: a treble clef staff and a bass clef staff. The key signature has two flats (Bb and Eb). The first measure has a whole note chord C7 in the treble and a whole note chord Eb in the bass. The second measure has a whole rest in both staves. The third measure has a quarter note G4 in the treble and a quarter note Eb3 in the bass, followed by a quarter note F4 in the treble and a quarter note G4 in the bass. The fourth measure has a quarter note G4 in the treble and a quarter note Eb3 in the bass, followed by a quarter note F4 in the treble and a quarter note G4 in the bass.

Bb Cm7 F7 Bb Cm7 F7

Handwritten musical notation for the third system. It consists of two staves: a treble clef staff and a bass clef staff. The key signature has two flats (Bb and Eb). The first measure has a whole note chord Bb in the treble and a whole note chord Eb in the bass. The second measure has a quarter note Bb4 in the treble and a quarter note Eb3 in the bass, followed by a quarter note Cm7 in the treble and a quarter note Eb3 in the bass. The third measure has a quarter note Bb4 in the treble and a quarter note Eb3 in the bass, followed by a quarter note Cm7 in the treble and a quarter note Eb3 in the bass. The fourth measure has a quarter note Bb4 in the treble and a quarter note Eb3 in the bass, followed by a quarter note Cm7 in the treble and a quarter note Eb3 in the bass.

Bb7 Eb7 Ab7 TO CODA ♯ Bb Cm7 F7

Handwritten musical notation for the fourth system. It consists of two staves: a treble clef staff and a bass clef staff. The key signature has two flats (Bb and Eb). The first measure has a whole rest in the treble and a whole note chord Bb7 in the bass. The second measure has a whole note chord Eb7 in the treble and a whole note chord Ab7 in the bass. The third measure has a whole rest in both staves. The fourth measure has a whole note chord Bb in the treble and a whole note chord Eb in the bass.

Handwritten musical notation for the first system. It consists of two staves (treble and bass clef) with a key signature of two flats (Bb and Eb). The first measure is labeled with a chord symbol **C7** above the staff. The second measure is empty. The third measure is labeled with a chord symbol **F7** above the staff. The fourth measure is empty. The notation shows block chords in the treble clef and dyads in the bass clef.

Handwritten musical notation for the second system. It consists of two staves with a key signature of two flats. The first measure is labeled with a chord symbol **Bb** above the staff. The second measure is labeled with **Cmi7** above the staff. The third measure is labeled with **F7** above the staff. The fourth measure is labeled with **Bb** above the staff. The fifth measure is labeled with **Cmi7** above the staff. The sixth measure is labeled with **F7** above the staff. The notation shows block chords in the treble clef and single notes in the bass clef.

Handwritten musical notation for the third system. It consists of two staves with a key signature of two flats. The first measure is labeled with a chord symbol **Bb7** above the staff. The second measure is labeled with **Eb7** above the staff. The third measure is labeled with **Ab7** above the staff. The fourth measure is labeled with **Bb** above the staff. The fifth measure is labeled with **Cmi7** above the staff. The sixth measure is labeled with **F7** above the staff. Above the fifth and sixth measures, the text **AFTER LAST SOLO D.C. AL CODA** is written. The notation shows block chords in the treble clef and dyads in the bass clef. The system ends with a double bar line and repeat dots.

Handwritten musical notation for the fourth system, starting with a circled cross symbol and the word **CODA**. It consists of two staves with a key signature of two flats. The first measure is labeled with a chord symbol **Bb** above the staff. The second measure is labeled with **Dmi7** above the staff. The third measure is labeled with **G7** above the staff. The fourth measure is labeled with **Cmi7** above the staff. The fifth measure is labeled with **F7** above the staff. The sixth measure is labeled with **Bb** above the staff. The notation shows moving lines in both the treble and bass clefs.