

BASS

# MOAJE SWING ETUDE 3

COMP. ERIC WARREN

(BASED ON HAVE YOU MISS JONES)

SWING ♩=150



5

9



13

17

WALK

B<sup>b</sup>MAJ<sup>7</sup>

A<sup>b</sup>MIN<sup>7</sup>

D<sup>b</sup>7

G<sup>b</sup>MAJ<sup>7</sup>

E<sup>b</sup>MIN<sup>7</sup>

A<sup>7</sup>



D<sup>b</sup>MAJ<sup>7</sup>

A<sup>b</sup>MIN<sup>7</sup>

D<sup>b</sup>7

G<sup>b</sup>MAJ<sup>7</sup>

G<sup>b</sup>MIN<sup>7</sup>

C<sup>7</sup>



21

25

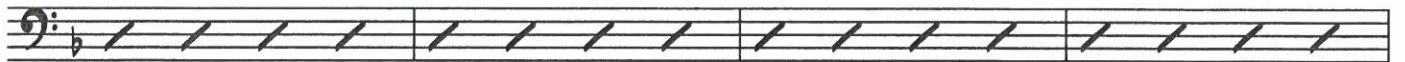
F<sup>b</sup>MAJ<sup>7</sup>

A<sup>b</sup>MIN<sup>7</sup>

D<sup>7(b9)</sup>

G<sup>b</sup>MIN<sup>7</sup>

C<sup>7</sup>



A<sup>b</sup>MIN<sup>9</sup>

D<sup>7+5</sup>

G<sup>b</sup>MIN<sup>7</sup>

C<sup>7+5</sup>

F<sup>b</sup>MAJ<sup>7</sup>



29

BASS

# MOAJE LATIN ETUDE 3

COMP. ERIC WARREN

(BASED ON ST. THOMAS)

LATIN  $\text{♩} = 190$



5



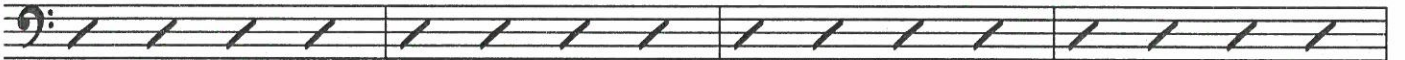
9



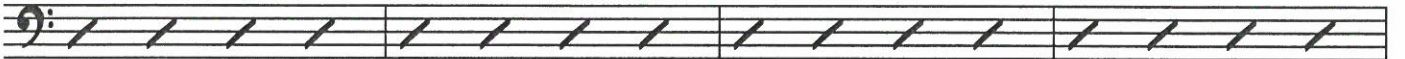
13

17  $C^b$

$E^{MIN7}$   $A^7$   $D^{MIN7}$   $G^7$   $C^b$

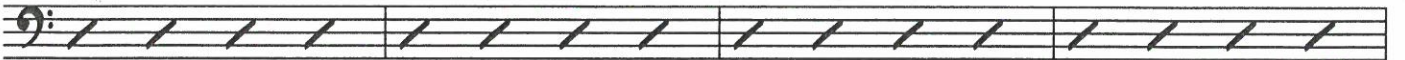


$C^b$   $E^{MIN7}$   $A^7$   $D^{MIN7}$   $G^7$   $C^b$



21

$E^{MIN7(b5)}$   $A^7$   $D^{MIN7}$   $G^7$



25

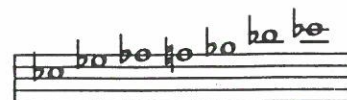
$C^7$   $C^9/E$   $F^b$   $F^{\#DIM7}$   $C^b/G$   $G^7$   $C^b$



29



# 6. Eb BLUES



Eb BLUES SCALE

## A MELODY

### Dr. Jay

♩ = 120

Musical notation for the melody, consisting of three staves. The first staff contains the first two measures, the second staff the next two, and the third staff the final two. Chord symbols above the notes include Eb7, Ab7, Eb7, Bb-, Eb7, Ab7, Ab7, Eb7, GØ, C7, F-, Bb7, G-, C7, F-, and Bb7. The notation includes triplets and slurs.

## B Play 4 Choruses

Musical notation for the first four choruses, consisting of three staves. Each staff contains four measures of music. Chord symbols above the notes include Eb7, Ab7, Eb7, Bb-, Eb7, Ab7, Ab7, Eb7, GØ, C7+9, F-, Bb7, G-, C7, F-, and Bb7.

## C Play 5 Choruses

Musical notation for the first five choruses, consisting of three staves. Each staff contains five measures of music. Chord symbols above the notes include Eb7, Ab7, Eb7, Bb-, Eb7, Ab7, AØ7, EbΔ, F-, G-, F#, F-, Bb7, G-, C7, F-, and Bb7.

BASS

# I GOT RHYTHM

LISTEN AND ANALYZE HEAD

Track 15  
JAZZ DEMO

MUSIC AND LYRICS BY  
GEORGE GERSHWIN  
AND IRA GERSHWIN

MEDIUM UP-TEMPO SWING

PLAY THE HEAD

Track 16  
PLAY ALONG

Chords: Bb, Cm7, F7, Bb, Cm7, F7, Bb7

Chords: Eb7, Ab7, Bb, Cm7, F7, Bb, D7

Chords: G7, C7, F7

Chords: Bb, Cm7, F7, Bb, Cm7, F7, Bb7

Chords: Eb7, Ab7, Bb, Cm7, F7, Bb, Cm7, F7, Bb

TO CODA ♪

SOLO SECTION - 2 CHORUSES

Chords: Cm7, F7, Bb7, Eb7, Ab7, Bb, Cm7, F7, Bb

Chords: D7, G7, C7

Chords: F7, Bb, Cm7, F7

Chords: Bb, Cm7, F7, Bb7, Eb7, Ab7, Bb

AFTER LAST SOLO  
D.C. AL CODA

♪ CODA

Chords: Bb, Dm7, G7, Eb, F7, Bb