

MISSOURI BANDMASTERS ASSOCIATION

MISSOURI ALL-STATE BAND AUDITION MATERIALS

TRUMPET & CORNET

Sets II, III, IV

Scale: All scales are to be MEMORIZED.
 Prepare them all slurred and tongued in sixteenth notes at quarter note = 88.
 Scales should be performed ascending and descending. Scales given are the starting tone. DO NOT TRANSPOSE.

All scales are to be prepared from required scale sheet as written.

Chromatic: Perform the chromatic exactly as written.

Major Scales: C G D A E B/Cb F#/Gb C#/Db Ab Eb Bb F

Minor Scales: a e b f# c# g#/ab d#/eb a#/bb f c g d

Books: *Arban Complete Conservatory Method for Trumpet, #021 – Goldman (edited)/*
Carl Fischer Publication

Set I (2020-21)	Arban	p. 21	#47
		p. 24	#9
		p. 56	#69 – lines 3, 9, & 11 (Bb, E, D)
		p. 189	#138
		p. 221	#102
		p. 285	#1 – first 7 lines (to key change)

Set II (2021-22)	Arban	p. 22	#48
		p. 46-47	#28 – all
		p. 125	#1 – lines 5, 11, & 13 (E, Bb, C)
		p. 190	#142
		p. 205	#53
		p. 290	#6 – first 6 lines (to key change)

Set III (2022-23)	Arban	p. 22	#49
		p. 33	#31
		p. 56	#69 – lines 2, 10, & 12 (F, A, G)
		p. 189	#139
		p. 206	#57
		p. 293	#9 – first 5 lines

Set IV (2023-24)	Arban	p. 22	#50
		p. 47	#29 – all
		p. 125	#1 – lines 3, 8, & 12 (D, G, B)
		p. 190	#143
		p. 213	#76
		p. 287	#3 – first 7 lines (to key change)



MISSOURI ALL-STATE-BAND AUDITION SCALES

to be played at a minimum tempo of quarter note = 88

Trumpet

Chromatic Scale

The chromatic scale is written on two staves of music. The first staff shows the ascending scale from C4 to C5, and the second staff shows the descending scale from C5 to C4. The notes are played in a steady eighth-note rhythm.

Missouri ASB Major Scales

C Major Scale

The C major scale is written on a single staff of music. It consists of eight measures: four measures for the ascending scale and four measures for the descending scale.

G Major Scale

The G major scale is written on a single staff of music. It consists of eight measures: four measures for the ascending scale and four measures for the descending scale.

D Major Scale

The D major scale is written on a single staff of music. It consists of eight measures: four measures for the ascending scale and four measures for the descending scale.

A Major Scale

The A major scale is written on a single staff of music. It consists of eight measures: four measures for the ascending scale and four measures for the descending scale.

E Major Scale

The E major scale is written on a single staff of music. It consists of eight measures: four measures for the ascending scale and four measures for the descending scale.

B Major Scale



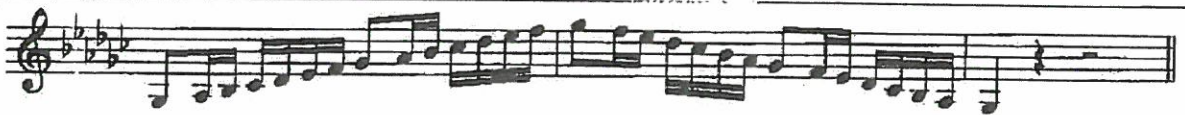
Cb Major Scale



F# Major Scale



Gb Major Scale



C# Major Scale



Db Major Scale



Ab Major Scale



Eb Major Scale



Bb Major Scale



F Major Scale



Missouri ASB Melodic Minor Scales

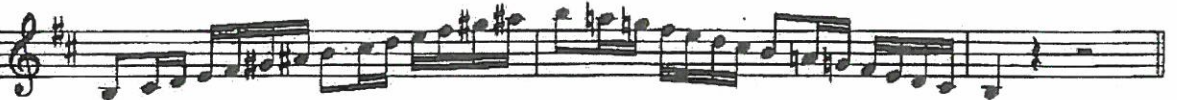
A Melodic Minor



E Melodic Minor



B Melodic Minor



F# Melodic Minor



C# Melodic Minor



G# Melodic Minor



Ab Melodic Minor



D# Melodic Minor



Eb Melodic Minor



A# Melodic Minor



Bb Melodic Minor



F Melodic Minor



C Melodic Minor



G Melodic Minor



D Melodic Minor



50. $\text{♩} = 60 - 116$

D. C.

29. $\text{♩} = 96$

(#1)

Line 3

Handwritten musical notation for Line 3, featuring a treble clef, a key signature of one sharp (F#), and a series of eighth notes with stems pointing down.

Line 8 → District *Regina Victoria*

Handwritten musical notation for Line 8, featuring a treble clef, a key signature of one sharp (F#), and a series of eighth notes with stems pointing down.

Line 12

Handwritten musical notation for Line 12, featuring a treble clef, a key signature of two sharps (F#, C#), and a series of eighth notes with stems pointing down.

District: All

Handwritten musical score for "Tukutukutu" on page 190. It consists of three staves of music in 8/8 time with a tempo of quarter note = 104. The first staff is circled and labeled "143." and "Tukutukutu". The music features a mix of eighth and sixteenth notes.

District: All

ROMEO.

Bellini.

76 Moderato

f *rit.* *a tempo.*

District
Start

3. Moderato. ♩ : 86

mp *p* *cresc.* *f* *dim.* *pp* stop