

BASS

MOAJE SWING ETUDE 4

COMP. ERIC WARREN

(BASED ON TAKE THE A TRAIN)

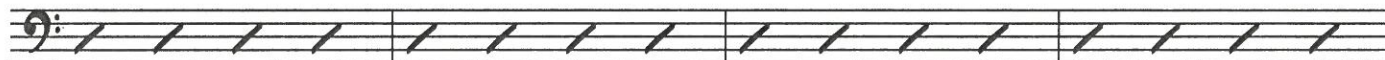
♩=142



5

9 C⁶

D⁷(#11)



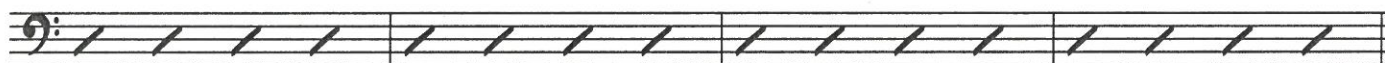
D^{MIN}7

G⁷

C

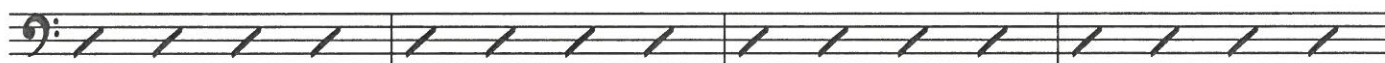
G^{MIN}7

C⁷



13

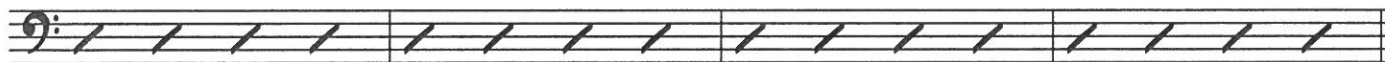
17 F^{MAJ}7



D⁹

D^{MIN}9

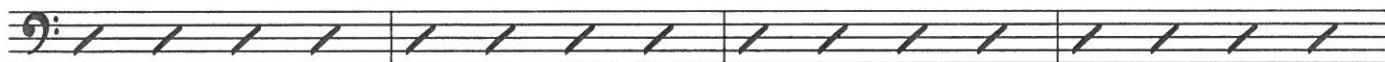
G⁷(b9)



21

25 C⁶

D⁷(#11)



D^{MIN}7

G⁷



29

COPYRIGHT

BASS

MOAJE LATIN ETUDE 4

COMP. ERIC WARREN

(BASED ON RECORDAME)

♩=147

STRAIGHT ♩'s



5

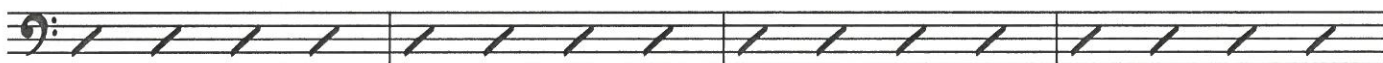


9

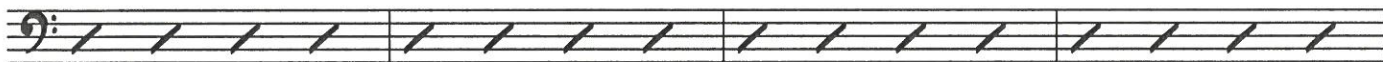


13

17 A MIN⁷



C MIN⁷



21

C MIN⁷

F⁷

B^b MAJ⁷

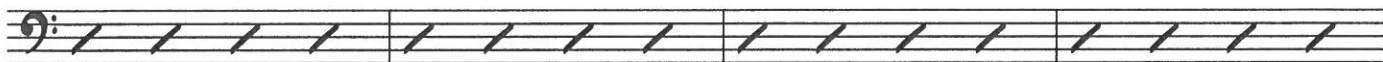
B^b MIN⁷

E^{b7}

A^b MAJ⁷

A^b MIN⁷

D^{b7}



25

G^b MAJ⁷

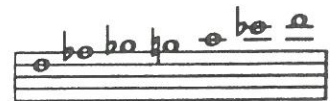


29

COPYRIGHT



8. F BLUES



F BLUES SCALE

A Little of This?

♩ = 100

First system: F7, Bb7, F7, C-, F7

Second system: Bb7, Bb7, F7, A∅, D7+9

Third system: G-, C7, A-, D7, G-, C7

B Play 4 Choruses

First system: F7, Bb7, F7, C-, F7

Second system: Bb7, Bb7, F7, A∅, D7+9

Third system: G-, C7, A-, D7, G-, C7

C Play 4 Choruses

First system: F7, Bb7, F7, C-, F7

Second system: Bb7, Bb7, FΔ, G-, A-, Ab-

Third system: G-, C7, A-, D7, G-, C7

SATIN DOLL

BASS


LISTEN AND ANALYZE HEAD  Track 11 JAZZ DEMO

PLAY THE HEAD  Track 12 PLAY ALONG

BY DUKE ELLINGTON

EASY SWING
INTRO
N.C.

♩ Dmi7 G7 Dmi7 G7



EMI7 A7 EMI7 A7 AMI7 D7 Abmi7 Db7 ^{1.} C7 B7 Bb7 A7

^{2.} Cma7 Gmi7 C7 Fma7

AMI7 D7 Dmi7 G7 Dmi7 G7 Dmi7 G7

EMI7 A7 EMI7 A7 AMI7 D7 Abmi7 Db7 C7 B7 Bb7 A7

SOLO SECTION - 2 CHORUSES

Dmi7 G7 Dmi7 G7 EMI7 A7 EMI7 A7 AMI7 D7 Abmi7 Db7

^{1.} C7 B7 Bb7 A7 ^{2.} Cma7 Gmi7 C7

Fma7 AMI7 D7 Dmi7 G7 Dmi7 G7

AFTER LAST SOLO
D.S. ♩ AL CODA

Dmi7 G7 EMI7 A7 EMI7 A7 AMI7 D7 Abmi7 Db7 C7 B7 Bb7 A7

♩ CODA
AMI7 D7 Abmi7 Db7 C7 B7 Bb7 A7 AMI7 D7 Abmi7 Db7 C \flat

DRUMS

SATIN DOLL

LISTEN AND ANALYZE HEAD

Track 11
JAZZ DEMO

PLAY THE HEAD

Track 12
PLAY ALONG

BY DUKE ELLINGTON

EASY SWING
INTRO

The first section of the piece begins with an 'EASY SWING INTRO' in 4/4 time. The drum notation consists of several staves. The first staff shows a series of eighth notes with 'x' marks, indicating a specific rhythmic pattern. This is followed by staves with rests and various rhythmic notations, including eighth and sixteenth notes, and a 'FILL' section at the end of the first line.

TO CODA

FILL

SOLO SECTION - 2 CHORUSES

The solo section consists of two choruses, each marked with a first and second ending bracket. The notation includes various rhythmic patterns and rests. The first chorus ends with a 'TO CODA' instruction. The second chorus ends with a 'FILL' instruction. The section concludes with a 'CODA' section, which includes a 'LET RING' instruction.

AFTER LAST SOLO
O.S. & AL CODA

⊕ CODA

LET RING

© 1942 (Renewed 1970) EMI ROBBINS CATALOG INC.
 All Rights Controlled by EMI ROBBINS CATALOG INC. (Publishing)
 and WARNER BROS. PUBLICATIONS U.S. INC. (Print)
 All Rights Reserved