

BASS

# MOAJE SWING ETUDE 1

COMP. ERIC WARREN

(BASED ON THERE WILL NEVER BE ANOTHER YOU)

MEDIUM SWING ♩=126

IN 2

5

9

13 WALK IN 4

17 E<sup>b</sup>MAJ<sup>7</sup>

D<sup>MIN</sup>7(b5)

G<sup>7</sup>

C<sup>MIN</sup>7

B<sup>b</sup>MIN<sup>9</sup>

E<sup>b</sup>13

21

A<sup>b</sup>MAJ<sup>7</sup>

D<sup>b</sup>9(#11)

E<sup>b</sup>MAJ<sup>7</sup>

A<sup>MIN</sup>7(b5)

D<sup>7</sup>

25

E<sup>b</sup>6

A<sup>b</sup>9(#11)

G<sup>MIN</sup>7

C<sup>7</sup>

F<sup>MIN</sup>7

B<sup>b</sup>13

E<sup>b</sup>6

D/E<sup>b</sup>

29

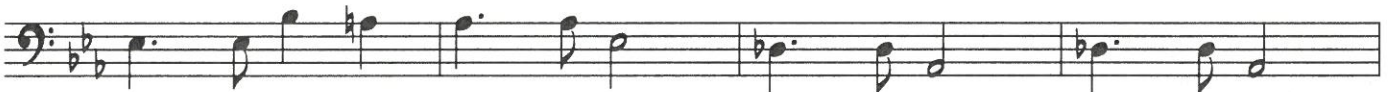
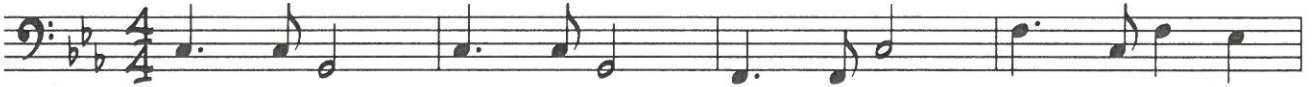
BASS

# MOAJE LATIN ETUDE 1

(BASED ON BLUE BOSSA)

COMP. ERIC WARREN

BOSSA NOVA ♩=140



13

17 **C MIN<sup>6</sup>**  
PLAY CHANGES

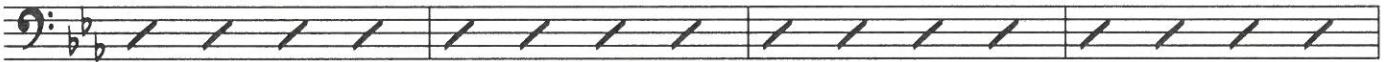
**F MIN<sup>7</sup>**



**D MIN<sup>7(b5)</sup>**

**G<sup>7(#9)</sup>**

**C MIN<sup>6</sup>**

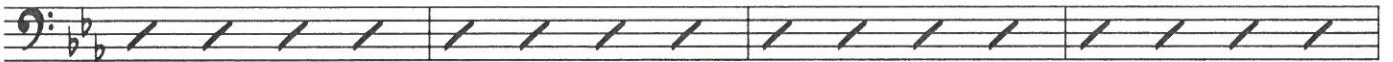


21

**E<sup>b</sup> MIN<sup>7</sup>**

**A<sup>b</sup>7**

**D<sup>b</sup> MAJ<sup>7</sup>**



25

**D MIN<sup>7(b5)</sup>**

**G<sup>7(#9)</sup>**

**C MIN<sup>6</sup>**



29

# THE PREACHER

BASS

LISTEN AND ANALYZE HEAD

Track 7  
JAZZ DEMO

PLAY THE HEAD

Track 8  
PLAY ALONG

BY HORACE SILVER

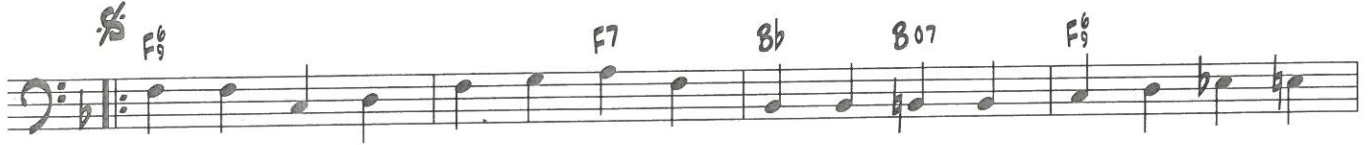
DOWN-HOME SWING

INTRO  
Gmi7

G#07    Ami7    Dmi7    Gmi7    C7    F6



F6    F7    Bb    B07    F6



G7    C7



F6    Bb6    A7

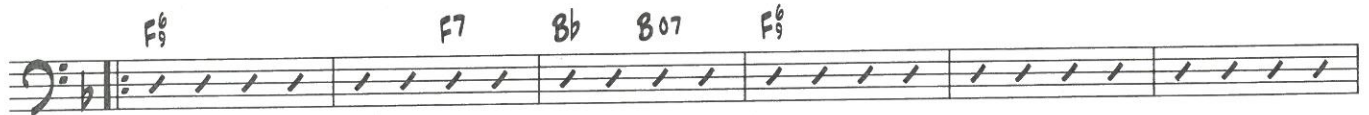


Gmi7    G#07    Ami7    TO CODA ⊕  
Dmi7    Gmi7    C7    1. F6    2. F6

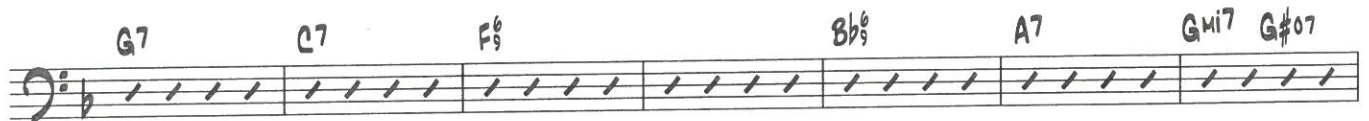


SOLO SECTION - 2 CHORUSES


F6    F7    Bb    B07    F6



G7    C7    F6    Bb6    A7    Gmi7    G#07



Ami7    Dmi7    Gmi7    C7    F6    AFTER LAST SOLO D.S. ⊕ AL CODA  
Gmi7    C7    F6

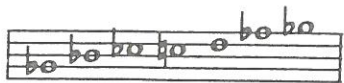


⊕ CODA

Gmi7    G#07    Ami7    Dmi7    Gmi7    G#07    Ami7    Dmi7    Gmi7    C7    F6



© 1959 ECAROH MUSIC, INC. (ASCAP)  
Copyright Renewed  
All Rights Reserved    Used by Permission



Bb BLUES SCALE

# 1. Bb BLUES



## Kenny'll Make It

♩ = 96

### A MELODY

### B SWING FEEL - Play 4 Choruses

### C BOSSA NOVA FEEL - Play 4 Choruses