

# Poplar Bluff Sho-Me Band Warm-Ups 2021

Alto Sax

**A** 9 Count Tones on F Concert

Winters

11

**B** Remington Exercise #1

22

32

**C** Remington Exercise #2

41

This section contains three staves of music. The first staff, labeled 'A', is titled '9 Count Tones on F Concert' and consists of a single line of music with nine measures of half notes. The second staff, labeled 'B', is titled 'Remington Exercise #1' and contains two lines of music with various note values and rests. The third staff, labeled 'C', is titled 'Remington Exercise #2' and also contains two lines of music with various note values and rests.

©

2

49

Poplar Bluff Sho-Me Band Warm-Ups 2021

**D** Flexibility Exercise

53

65

71

**E** Rhythm Exercise

79

89

Rhythm 2

Rhythm 3 (m. 22)

This section contains five staves of music. The first staff, labeled 'D', is titled 'Flexibility Exercise' and features a single line of music with a wide range of intervals and slurs. The second staff, labeled 'E', is titled 'Rhythm Exercise' and contains two lines of music with various rhythmic patterns. The third staff, labeled 'Rhythm 2', shows a sequence of chords. The fourth staff, labeled 'Rhythm 3 (m. 22)', shows a sequence of chords with accents. The fifth staff, labeled 'Rhythm 3 (m. 22)', shows a sequence of chords with accents.

Rhythm 4 (m. 53)

Poplar Bluff Sho-Me Band Warm-Ups 2021

Rhythm 6 (m. 101)

Musical staff for Rhythm 4 (m. 53) in G major, featuring eighth and sixteenth note patterns with accents.

Rhythm 5 (m. 65)

Musical staff for Rhythm 5 (m. 65) in G major, featuring eighth and sixteenth note patterns with accents.

F Unison Tuning

Musical staff for F Unison Tuning in G major, showing a sequence of notes with a *fff* dynamic marking.

G Scale Tuning

Musical staff for G Scale Tuning in G major, showing a sequence of notes.

H Chord Tuning

Musical staff for H Chord Tuning in G major, showing a sequence of chords.

Musical staff for I Power Chords in G major, showing a sequence of power chords.

Poplar Bluff Sho-Me Band Warm-Ups 2021

I Power Chords

Musical staff for I Power Chords in G major, showing a sequence of power chords with a *mf* dynamic marking.

Fundamental Tuning Exercise

Musical staff for Fundamental Tuning Exercise in G major, showing a sequence of notes with a *f* dynamic marking.

J

Musical staff for J in G major, showing a sequence of notes with a *ff* dynamic marking.

K Fire Of Eternal Glory

Musical staff for K Fire Of Eternal Glory in G major, showing a sequence of notes.

Musical staff for K Fire Of Eternal Glory in G major, showing a sequence of notes.

Musical staff for K Fire Of Eternal Glory in G major, showing a sequence of notes with a *f* dynamic marking.

214 

222 

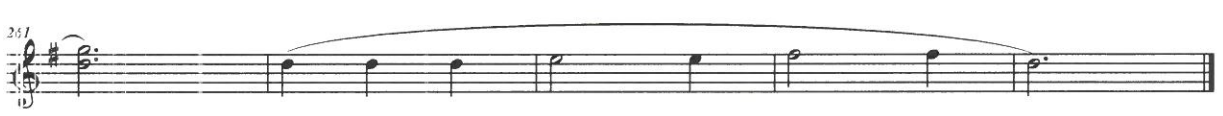
230 

M Be Thou My Vision

239 

250 

N Faith of Our Fathers

257 



# MISSOURI ALL-STATE-BAND AUDITION SCALES

to be played at a minimum tempo of quarter note = 88

Saxophones

## Chromatic Scale

Two staves of musical notation for a chromatic scale in 4/4 time. The first staff shows the ascending scale from C4 to C5, and the second staff shows the descending scale from C5 to C4. The notes are: C, C#, D, D#, E, E#, F, F#, G, G#, A, A#, B, B#, C.

## Missouri ASB Major Scales

### C Major Scale

#12

Musical notation for the C Major Scale in 4/4 time, starting on C4 and ending on C5. The notes are: C, D, E, F, G, A, B, C, D, E, F, G, A, B, C.

### G Major Scale

#1

Musical notation for the G Major Scale in 4/4 time, starting on G4 and ending on G5. The notes are: G, A, B, C, D, E, F#, G, A, B, C, D, E, F#, G.

### D Major Scale

#2

Musical notation for the D Major Scale in 4/4 time, starting on D4 and ending on D5. The notes are: D, E, F#, G, A, B, C#, D, E, F#, G, A, B, C#, D.

### A Major Scale

#3

Musical notation for the A Major Scale in 4/4 time, starting on A4 and ending on A5. The notes are: A, B, C#, D, E, F#, G#, A, B, C#, D, E, F#, G#, A.

### E Major Scale

#4

Musical notation for the E Major Scale in 4/4 time, starting on E4 and ending on E5. The notes are: E, F#, G#, A, B, C#, D#, E, F#, G#, A, B, C#, D#, E.



**B Major Scale**

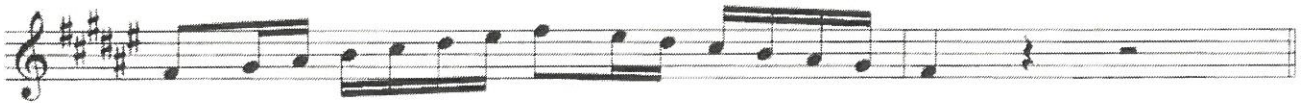
#5

**Cb Major Scale**

#5

**F# Major Scale**

#6

**Gb major Scale**

#6

**C# Major Scale**

#7

**Db Major Scale**

#7

**Ab Major Scale**

#8

**Eb Major Scale**

#9







**Ab Melodic Minor**

#5



Musical notation for the Ab Melodic Minor scale, starting on Ab. The scale is written in treble clef with a key signature of three flats (Bb, Eb, Ab). The notes are: Ab, Bb, C, Db, Eb, F, G, Ab. The notation includes slurs and accents over the notes.

**D# Melodic Minor**

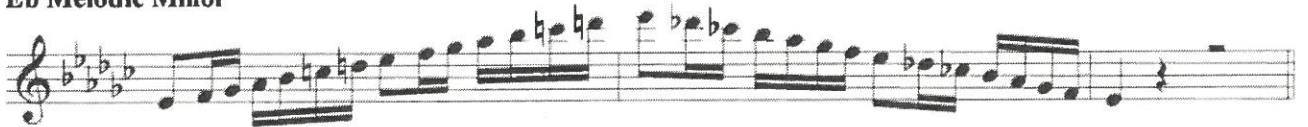
#6



Musical notation for the D# Melodic Minor scale, starting on D#. The scale is written in treble clef with a key signature of four sharps (F#, C#, G#, D#). The notes are: D#, E#, F#, G#, A#, B, C#. The notation includes slurs and accents over the notes.

**Eb Melodic Minor**

#6



Musical notation for the Eb Melodic Minor scale, starting on Eb. The scale is written in treble clef with a key signature of three flats (Bb, Eb, Ab). The notes are: Eb, F, G, Ab, Bb, C, D. The notation includes slurs and accents over the notes.

**A# Melodic Minor**

#7



Musical notation for the A# Melodic Minor scale, starting on A#. The scale is written in treble clef with a key signature of four sharps (F#, C#, G#, D#). The notes are: A#, B, C#, D#, E, F#, G#. The notation includes slurs and accents over the notes.

**Bb Melodic Minor**

#7



Musical notation for the Bb Melodic Minor scale, starting on Bb. The scale is written in treble clef with a key signature of two flats (Bb, Eb). The notes are: Bb, C, D, Eb, F, G, Ab. The notation includes slurs and accents over the notes.

**F Melodic Minor**

#8



Musical notation for the F Melodic Minor scale, starting on F. The scale is written in treble clef with a key signature of two flats (Bb, Eb). The notes are: F, G, Ab, Bb, C, D, E. The notation includes slurs and accents over the notes.

**C Melodic Minor**

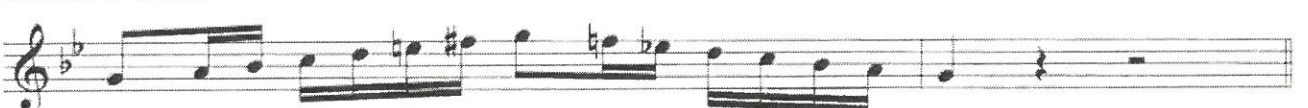
#9



Musical notation for the C Melodic Minor scale, starting on C. The scale is written in treble clef with a key signature of one flat (Bb). The notes are: C, D, Eb, F, G, Ab, B. The notation includes slurs and accents over the notes.

**G Melodic Minor**

#10



Musical notation for the G Melodic Minor scale, starting on G. The scale is written in treble clef with a key signature of one flat (Bb). The notes are: G, Ab, Bb, C, D, Eb, F. The notation includes slurs and accents over the notes.

**D Melodic Minor**

#11



Musical notation for the D Melodic Minor scale, starting on D. The scale is written in treble clef with a key signature of two flats (Bb, Eb). The notes are: D, Eb, F, G, Ab, B, C. The notation includes slurs and accents over the notes.