

ALTO SAX.

MOAJE SWING ETUDE 2

(BASED ON DO NOTHING TILL YOU HEAR FROM ME)

COMP. AARON LEHDE

SWING

mf

f

9

ff mp f

ff

17

ff

25

ff

29

ALTO SAX.

MOAJE LATIN ETUDE 2

(BASED ON SONG FOR MY FATHER)

COMP. AARON LEHDE

BOSSA

f

mf *p*

9

mf *mp*

f

17

ff

mf



A BLUES SCALE

3. A BLUES



A MELODY

Now Hear This!

♩ = 96

Chords: A7, D7, A7, E-, A7, D7, D7, A7, C#Ø, F#7+9, B-, E7, C#-, F#7, B-, E7

B Play 5 Choruses

Chords: A7, D7, A7, E-, A7, D7, D7, A7, C#Ø, F#7+9, B-, E7, C#-, F#7, B-, E7

C Play 3 Choruses

Chords: A7, D7, A7, E-, A7, D7, EbØ7, AA, B-, C#-, C-, B-, E7, C#-, F#7, B-, E7

CANTALOUPE ISLAND

E♭ INSTRUMENTS
HEAD

LISTEN AND ANALYZE HEAD

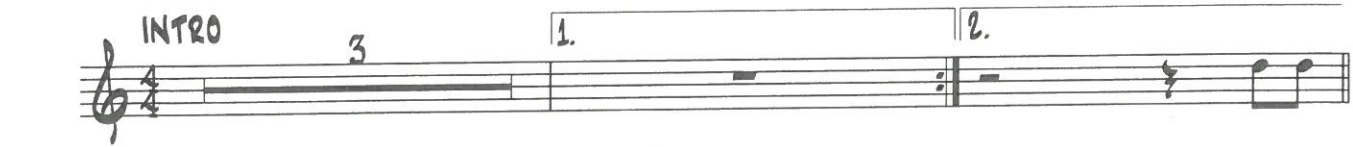
Track 5
JAZZ DEMO

PLAY THE HEAD

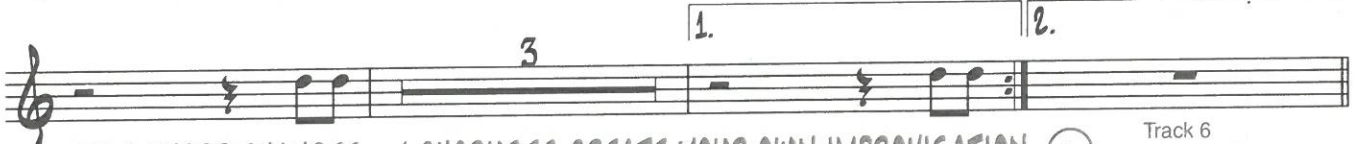
Track 6
PLAY ALONG

By HERBIE HANCOCK

ROCK
INTRO

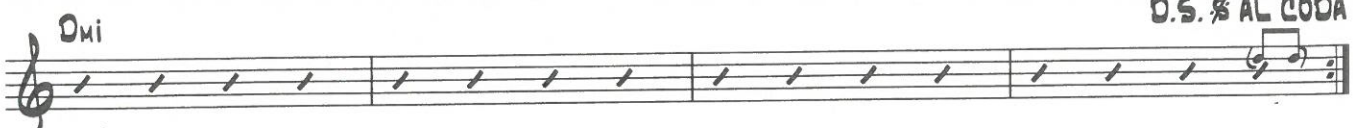
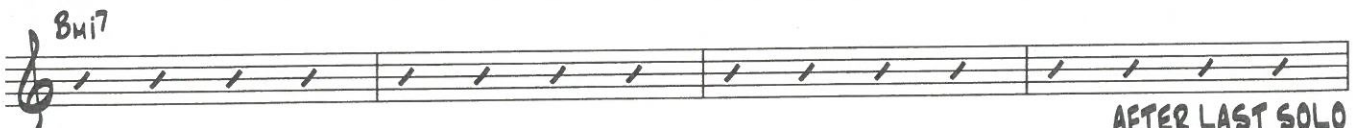


TO CODA ♪

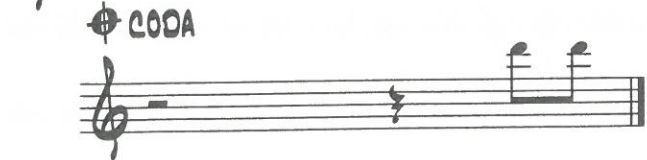


SOLO CHORD CHANGES - 4 CHORUSES CREATE YOUR OWN IMPROVISATION

Track 6
PLAY ALONG



AFTER LAST SOLO
O.S. ♪ AL CODA



EXAMPLE IMPROVISATION

E♭ INSTRUMENTS

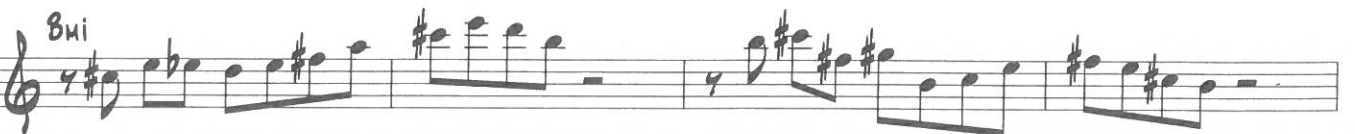
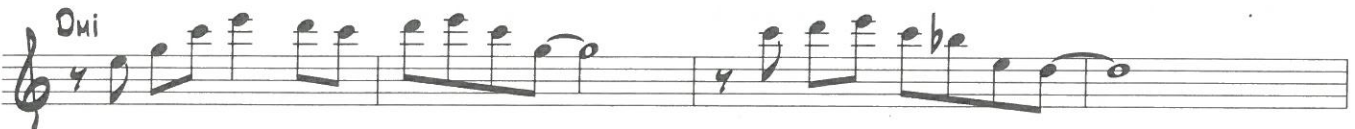
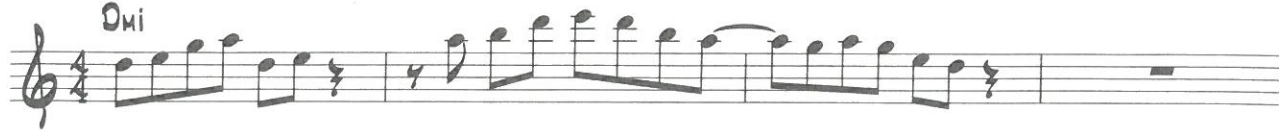
LISTEN AND ANALYZE
(JAZZ DEMO PLAYS 2 CHORUSES)



Track 5
JAZZ DEMO

BY WILLIE THOMAS

ROCK
Dmi



LICKS AND TRICKS

E♭ INSTRUMENTS

Lick #1 is a two-bar phrase written as it fits in each of the three chords in this tune. Lick #2 is based on a blues scale written here for each of the three chords. Lick #3 is an eighth-note line outlining the three chords using the ninth.

1.) SAME LICK OVER 3 CHORDS

Musical notation for Lick #1, showing a two-bar phrase repeated over three chords: Dmi, Bb7, and Bmi. The melody consists of quarter notes and eighth notes.

2.) SAME LICK OVER 3 CHORDS

Musical notation for Lick #2, showing a two-bar phrase repeated over three chords: Dmi, Bb7, and Bmi. The melody is based on a blues scale with sharp and flat alterations.

3.) SAME LICK OVER 3 CHORDS

Musical notation for Lick #3, showing a two-bar phrase repeated over three chords: Dmi, Bb7, and Bmi. The melody is an eighth-note line outlining the chords using the ninth.

SCALES AND CHORDS

Musical notation for Dmi scale: A single line of music in treble clef showing the Dmi scale (D, E, F, G, A, B) with a repeat sign.

Musical notation for Bb7 scale: A single line of music in treble clef showing the Bb7 scale (Bb, C, Db, Eb, F, G) with a repeat sign.

Musical notation for Bmi7 scale: A single line of music in treble clef showing the Bmi7 scale (B, C, D, E, F#, G#) with a repeat sign.

Musical notation for Dmi scale: A single line of music in treble clef showing the Dmi scale (D, E, F, G, A, B) with a repeat sign.

DISCOGRAPHY

CANTALOUPE ISLAND

Herbie Hancock - *Cantaloupe Island* - Blue Note 29331

Herbie Hancock - *Best Of Herbie Hancock (The Blue Note Years)* - Blue Note 91143