

# Poplar Bluff Sho-Me Band Warm-Ups 2021

Baritone Sax **A** 9 Count Tones on F Concert

Winters

11

**B** Remington Exercise #1

22

32

**C** Remington Exercise #2

41

©

2

49

Poplar Bluff Sho-Me Band Warm-Ups 2021

**D** Flexibility Exercise

58

65

**E** Rhythm Exercise

71

79

Rhythm 2

Rhythm 3 (m. 22)

85

Rhythm 4 (m. 53) Poplar Bluff Sho-Me Band Warm-Ups 2021 Rhythm 5 (m. 65) Rhythm 6 (m. 101) 3

104 **F** Unison Tuning

114 **G** Scale Tuning

125

136 **H** Chord Tuning

147

4 Poplar Bluff Sho-Me Band Warm-Ups 2021 **I** Power Chords

138 *mf*

139 *f*

178 *ff* **J** Fundamental Tuning Exercise

147

158 *mf* **K** Fire Of Eternal Glory

208 *f* *ff* *fff*

2:17 L O Sacred Head Now Wounded

2:25

2:33 M Be Thou My Vision

2:43 N Faith of Our Fathers

2:53

2:64



# MISSOURI ALL-STATE-BAND AUDITION SCALES

to be played at a minimum tempo of quarter note = 88

Saxophones

## Chromatic Scale

Two staves of musical notation for a chromatic scale in 4/4 time. The first staff shows the ascending scale from B<sub>2</sub> to B<sub>5</sub>. The second staff shows the descending scale from B<sub>5</sub> to B<sub>2</sub>. All notes are quarter notes.

## Missouri ASB Major Scales

### C Major Scale

#12

Handwritten number #12 in a box. Musical notation for the C Major scale in treble clef, 4/4 time, ascending and descending.

### G Major Scale

#1

Handwritten number #1 in a box. Musical notation for the G Major scale in treble clef, 4/4 time, ascending and descending.

### D Major Scale

#2

Handwritten number #2 in a box. Musical notation for the D Major scale in treble clef, 4/4 time, ascending and descending.

### A Major Scale

#3

Handwritten number #3 in a box. Musical notation for the A Major scale in treble clef, 4/4 time, ascending and descending.

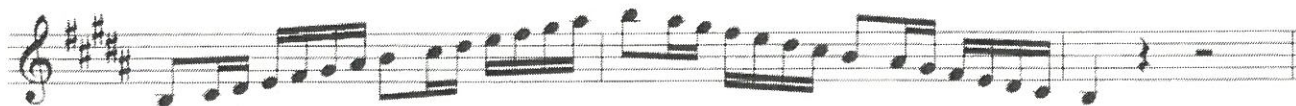
### E Major Scale

#4

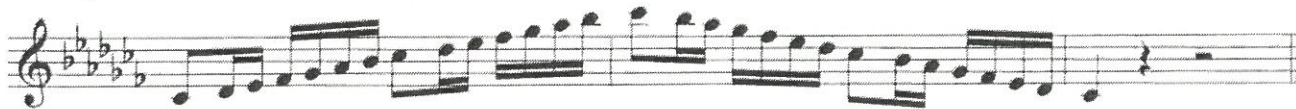
Handwritten number #4 in a box. Musical notation for the E Major scale in treble clef, 4/4 time, ascending and descending.

**B Major Scale**

#5

**Cb Major Scale**

#5

**F# Major Scale**

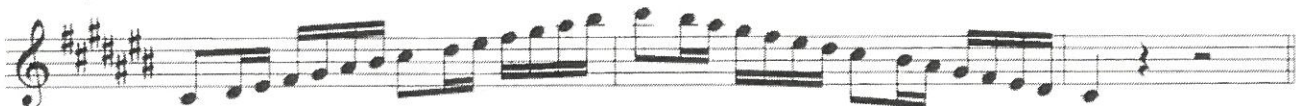
#6

**Gb major Scale**

#6

**C# Major Scale**

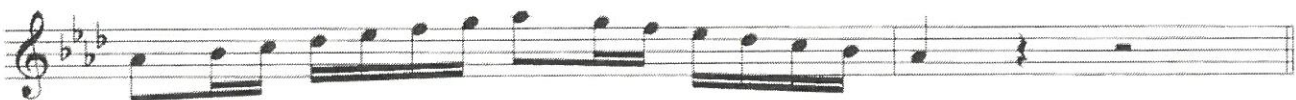
#7

**Db Major Scale**

#7

**Ab Major Scale**

#8

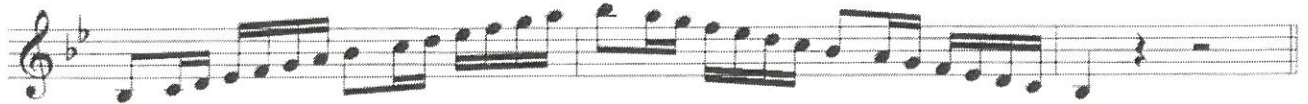
**Eb Major Scale**

#9



**Bb Major Scale**

#10



**F Major Scale**

#11



Missouri ASB Melodic Minor Scales

**A Melodic Minor**

#12



**E Melodic Minor**

#1



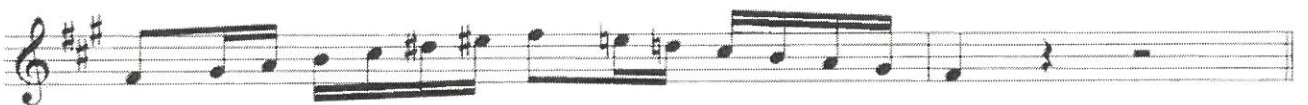
**B Melodic Minor**

#2



**F# Melodic Minor**

#3



**C# Melodic Minor**

#4



**G# Melodic Minor**

#5



**Ab Melodic Minor**

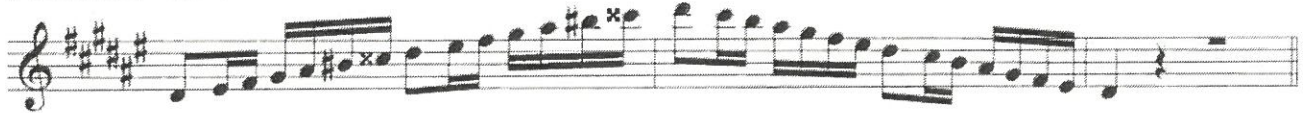
#5



Musical notation for the Ab Melodic Minor scale, starting on Ab and ending on Ab. The scale is written in treble clef with a key signature of three flats (Bb, Eb, Ab). The notes are: Ab, Bb, Cb, Db, Eb, Fb, Gb, Ab.

**D# Melodic Minor**

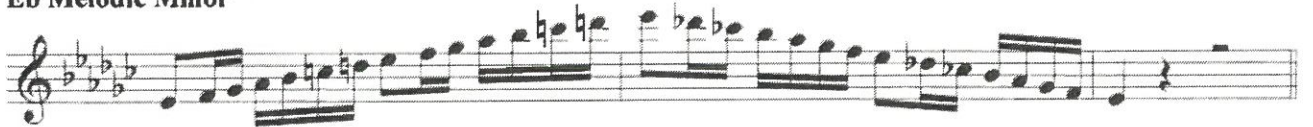
#6



Musical notation for the D# Melodic Minor scale, starting on D# and ending on D#. The scale is written in treble clef with a key signature of four sharps (F#, C#, G#, D#). The notes are: D#, E#, F#, G#, A#, B#, C#, D#.

**Eb Melodic Minor**

#6



Musical notation for the Eb Melodic Minor scale, starting on Eb and ending on Eb. The scale is written in treble clef with a key signature of three flats (Bb, Eb, Ab). The notes are: Eb, Fb, Gb, Ab, Bb, Cb, Db, Eb.

**A# Melodic Minor**

#7



Musical notation for the A# Melodic Minor scale, starting on A# and ending on A#. The scale is written in treble clef with a key signature of four sharps (F#, C#, G#, D#). The notes are: A#, B#, C#, D#, E#, F#, G#, A#.

**Bb Melodic Minor**

#7



Musical notation for the Bb Melodic Minor scale, starting on Bb and ending on Bb. The scale is written in treble clef with a key signature of two flats (Bb, Eb). The notes are: Bb, Cb, Db, Eb, Fb, Gb, Ab, Bb.

**F Melodic Minor**

#8



Musical notation for the F Melodic Minor scale, starting on F and ending on F. The scale is written in treble clef with a key signature of one flat (Bb). The notes are: F, G, Ab, Bb, Cb, Db, Eb, F.

**C Melodic Minor**

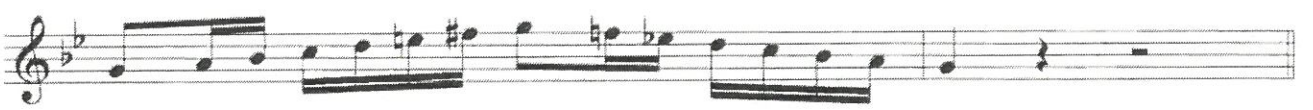
#9



Musical notation for the C Melodic Minor scale, starting on C and ending on C. The scale is written in treble clef with a key signature of two flats (Bb, Eb). The notes are: C, D, Eb, Fb, Gb, Ab, Bb, C.

**G Melodic Minor**

#10



Musical notation for the G Melodic Minor scale, starting on G and ending on G. The scale is written in treble clef with a key signature of one flat (Bb). The notes are: G, A, Bb, Cb, Db, Eb, Fb, G.

**D Melodic Minor**

#11



Musical notation for the D Melodic Minor scale, starting on D and ending on D. The scale is written in treble clef with a key signature of two flats (Bb, Eb). The notes are: D, E, Fb, Gb, Ab, Bb, Cb, D.