

Banbnc

Poplar Bluff Sho-Me Band Warm-Ups 2021

Trombone

A 9 Count Tones on F Concert

Winters

11

B Remington Exercise #1

22

32

C Remington Exercise #2

41

©

2
49

Poplar Bluff Sho-Me Band Warm-Ups 2021

D Flexibility Exercise

58

66

E Rhythm Exercise

73

82

Rhythm 2

Rhythm 3 (m. 22)

Rhythm 4 (m. 53)

91

99 Rhythm 5 (m. 65) Poplar Bluff Sho-Me Band Warm-Ups 202 Rhythm 6 (m. 101) **F** Unison Tuning 3

107 *fff*

118 **G** Scale Tuning

129 **H** Chord Tuning

140

151

4 162 **I** Power Chords Poplar Bluff Sho-Me Band Warm-Ups 2021 *mf* *f*

172 *ff*

182 **J** Fundamental Tuning Exercise

193

K Fire Of Eternal Glory 204

213 *f* *ff* *fff*

2.1 **L** O Sacred Head Now Wounded Poplar Bluff Sho-Me Band Warm-Ups 2021

Musical notation for the first system, starting at measure 2.1. It features a treble clef, a key signature of one flat (B-flat), and a common time signature. The melody is written on a single staff with various note values and rests.

2.18 **M** Be Thou My Vision

Musical notation for the second system, starting at measure 2.18. It features a treble clef, a key signature of one flat, and a 4/4 time signature. The melody is written on a single staff with various note values and rests.

2.16

Musical notation for the third system, starting at measure 2.16. It features a treble clef, a key signature of one flat, and a common time signature. The melody is written on a single staff with various note values and rests.

2.17 **N** Faith of Our Fathers

Musical notation for the fourth system, starting at measure 2.17. It features a treble clef, a key signature of one flat, and a common time signature. The melody is written on a single staff with various note values and rests.

2.18

Musical notation for the fifth system, starting at measure 2.18. It features a treble clef, a key signature of one flat, and a common time signature. The melody is written on a single staff with various note values and rests.



MISSOURI ALL-STATE-BAND AUDITION SCALES

to be played at a minimum tempo of quarter note = 88

Trombone

Chromatic Scale

Two staves of musical notation for a chromatic scale in 4/4 time. The first staff shows the ascending scale from C2 to B4, and the second staff shows the descending scale from B4 to C2. The notes are: C, C#, D, D#, E, E#, F, F#, G, G#, A, A#, B, B, A, A#, G, G#, F, F#, E, E#, D, D#, C.

Missouri ASB Major Scales

C Major Scale

#3

Single staff of musical notation for the C Major Scale in 4/4 time, starting on C2 and ending on C4. The notes are: C, D, E, F, G, A, B, C, D, E, F, G, A, B, C.

G Major Scale

#4

Single staff of musical notation for the G Major Scale in 4/4 time, starting on G2 and ending on G4. The notes are: G, A, B, C, D, E, F#, G, A, B, C, D, E, F#, G.

D Major Scale

#5

Single staff of musical notation for the D Major Scale in 4/4 time, starting on D2 and ending on D4. The notes are: D, E, F#, G, A, B, C#, D, E, F#, G, A, B, C#, D.

A Major Scale

#6

Single staff of musical notation for the A Major Scale in 4/4 time, starting on A2 and ending on A4. The notes are: A, B, C#, D, E, F#, G#, A, B, C#, D, E, F#, G#, A.

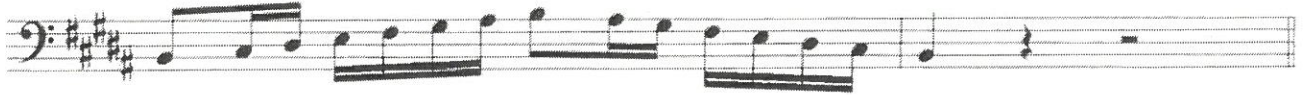
E Major Scale

#7

Single staff of musical notation for the E Major Scale in 4/4 time, starting on E2 and ending on E4. The notes are: E, F#, G#, A, B, C#, D#, E, F#, G#, A, B, C#, D#, E.

B Major Scale

#8



Cb Major Scale

#8



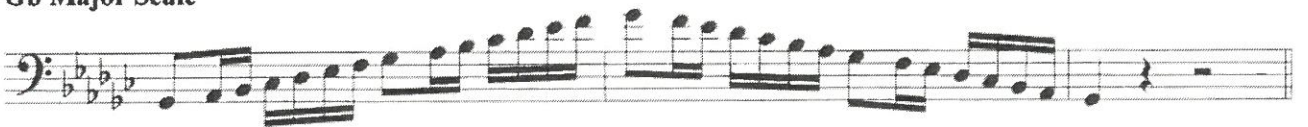
F# Major Scale

#9



Gb Major Scale

#9



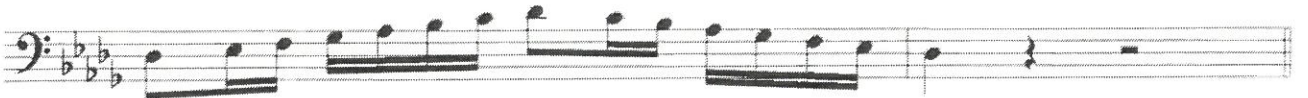
C# Major Scale

#10



Db Major Scale

#10



F Major Scale

#2



Bb Major Scale

#1



E_b Major Scale

#12

Musical notation for the E_b Major Scale in bass clef. The scale is written in a single line, starting on G₂ and ending on G₃. The notes are G₂, A₂, B₂, C₃, D₃, E₃, F₃, G₃. The key signature has two flats (B₂ and E₃ are natural).

A_b Major Scale

#11

Musical notation for the A_b Major Scale in bass clef. The scale is written in a single line, starting on C₃ and ending on C₄. The notes are C₃, D₃, E₃, F₃, G₃, A₃, B₃, C₄. The key signature has three flats (F₃, C₄, and G₃ are natural).

D_b Major Scale

#10

Musical notation for the D_b Major Scale in bass clef. The scale is written in a single line, starting on D₂ and ending on D₃. The notes are D₂, E₂, F₂, G₂, A₂, B₂, C₃, D₃. The key signature has four flats (A₂, E₃, B₂, and F₃ are natural).

G_b Major Scale

#9

Musical notation for the G_b Major Scale in bass clef. The scale is written in a single line, starting on E₂ and ending on E₃. The notes are E₂, F₂, G₂, A₂, B₂, C₃, D₃, E₃. The key signature has five flats (B₂, F₃, C₃, G₃, and D₃ are natural).

Misouri ASB Melodic Minor Scales

A Melodic Minor

#3

Musical notation for the A Melodic Minor Scale in bass clef. The scale is written in a single line, starting on A₂ and ending on A₃. The notes are A₂, B₂, C₃, D₃, E₃, F₃, G₃, A₃. The key signature has no sharps or flats.

E Melodic Minor

#4

Musical notation for the E Melodic Minor Scale in bass clef. The scale is written in a single line, starting on E₂ and ending on E₃. The notes are E₂, F₂, G₂, A₂, B₂, C₃, D₃, E₃. The key signature has one sharp (F₃ is natural).

B Melodic Minor

#5

Musical notation for the B Melodic Minor Scale in bass clef. The scale is written in a single line, starting on B₁ and ending on B₂. The notes are B₁, C₂, D₂, E₂, F₂, G₂, A₂, B₂. The key signature has two sharps (F₂ and C₃ are natural).

F# Melodic Minor

#6

Musical notation for the F# Melodic Minor scale in bass clef. The scale is written in two lines: an ascending line and a descending line. The key signature has two sharps (F# and C#). The ascending line starts on F# and goes up to D# (F#, G#, A#, B#, C#, D#). The descending line starts on D# and goes down to F# (D#, C#, B#, A#, G#, F#). The piece ends with a whole rest.

C# Melodic Minor

#7

Musical notation for the C# Melodic Minor scale in bass clef. The scale is written in two lines: an ascending line and a descending line. The key signature has three sharps (F#, C#, G#). The ascending line starts on C# and goes up to G# (C#, D#, E#, F#, G#). The descending line starts on G# and goes down to C# (G#, F#, E#, D#, C#). The piece ends with a whole rest.

G# Melodic Minor

#8

Musical notation for the G# Melodic Minor scale in bass clef. The scale is written in two lines: an ascending line and a descending line. The key signature has four sharps (F#, C#, G#, D#). The ascending line starts on G# and goes up to D# (G#, A#, B#, C#, D#). The descending line starts on D# and goes down to G# (D#, C#, B#, A#, G#). The piece ends with a whole rest.

A \flat Melodic Minor

#8

Musical notation for the A \flat Melodic Minor scale in bass clef. The scale is written in two lines: an ascending line and a descending line. The key signature has four flats (B \flat , E \flat , A \flat , D \flat). The ascending line starts on A \flat and goes up to D \flat (A \flat , B \flat , C \flat , D \flat). The descending line starts on D \flat and goes down to A \flat (D \flat , C \flat , B \flat , A \flat). The piece ends with a whole rest.

D# Melodic Minor

#9

Musical notation for the D# Melodic Minor scale in bass clef. The scale is written in two lines: an ascending line and a descending line. The key signature has five sharps (F#, C#, G#, D#, A#). The ascending line starts on D# and goes up to A# (D#, E#, F#, G#, A#). The descending line starts on A# and goes down to D# (A#, G#, F#, E#, D#). The piece ends with a whole rest.

E \flat Melodic Minor

#9

Musical notation for the E \flat Melodic Minor scale in bass clef. The scale is written in two lines: an ascending line and a descending line. The key signature has three flats (B \flat , E \flat , A \flat). The ascending line starts on E \flat and goes up to A \flat (E \flat , F \flat , G \flat , A \flat). The descending line starts on A \flat and goes down to E \flat (A \flat , G \flat , F \flat , E \flat). The piece ends with a whole rest.

A# Melodic Minor

#10

Musical notation for the A# Melodic Minor scale in bass clef. The scale is written in two lines: an ascending line and a descending line. The key signature has six sharps (F#, C#, G#, D#, A#, E#). The ascending line starts on A# and goes up to E# (A#, B#, C#, D#, E#). The descending line starts on E# and goes down to A# (E#, D#, C#, B#, A#). The piece ends with a whole rest.

B \flat Melodic Minor

#10

Musical notation for the B \flat Melodic Minor scale in bass clef. The scale is written in two lines: an ascending line and a descending line. The key signature has two flats (F \flat , C \flat). The ascending line starts on B \flat and goes up to F \flat (B \flat , C \flat , D \flat , E \flat , F \flat). The descending line starts on F \flat and goes down to B \flat (F \flat , E \flat , D \flat , C \flat , B \flat). The piece ends with a whole rest.

F Melodic Minor

#11

Musical notation for the F Melodic Minor scale in bass clef. The scale is written in a single line with a key signature of two flats (Bb and Eb). The notes are: F2, G2, Ab2, Bb2, C3, D3, Eb3, F3, G3, Ab3, Bb3, C4, D4, Eb4, F4. The notation includes slurs and accents over the notes.

C Melodic Minor

#12

Musical notation for the C Melodic Minor scale in bass clef. The scale is written in a single line with a key signature of one flat (Bb). The notes are: C2, D2, Eb2, F2, G2, Ab2, Bb2, C3, D3, Eb3, F3, G3, Ab3, Bb3, C4. The notation includes slurs and accents over the notes.

G Melodic Minor

#1

Musical notation for the G Melodic Minor scale in bass clef. The scale is written in a single line with a key signature of one flat (Bb). The notes are: G2, Ab2, Bb2, C3, D3, Eb3, F3, G3, Ab3, Bb3, C4, D4, Eb4, F4, G4. The notation includes slurs and accents over the notes.

D Melodic Minor

#2

Musical notation for the D Melodic Minor scale in bass clef. The scale is written in a single line with a key signature of two flats (Bb and Eb). The notes are: D2, Eb2, F2, G2, Ab2, Bb2, C3, D3, Eb3, F3, G3, Ab3, Bb3, C4, D4. The notation includes slurs and accents over the notes.